

# City of Pacifica

## Introduction to Re-Districting

### Public Hearing #1



# Districting Process

---

Step	Description
<b>Census Data Release</b> August 12, 2021	<ul style="list-style-type: none"><li>• Census Bureau releases official 2020 Census population data</li></ul>
<b>California Data Release</b> September 20, 2021	<ul style="list-style-type: none"><li>• California Statewide Database releases California's official 'prisoner-adjusted' 2020 redistricting data</li></ul>
<b>Public Hearing #1</b> January 10, 2022	<ul style="list-style-type: none"><li>• Held prior to release of draft maps</li><li>• Educate, solicit input on neighborhoods and Communities of Interest</li></ul>
<b>Public Map Submission Deadline</b> February 4, 2022	<ul style="list-style-type: none"><li>• Free online tools</li><li>• Additional tools?</li></ul>

# Districting Process (continued)

---

Step	Description
<b>Public Hearing #2</b> February 14, 2022	<ul style="list-style-type: none"><li>• Review draft map(s)</li><li>• Educate, solicit input on neighborhoods and Communities of Interest</li><li>• Discuss draft maps revisions; discuss election sequencing</li></ul>
<b>Public Hearing #3</b> February 28, 2022	<ul style="list-style-type: none"><li>• Held after release of draft maps</li><li>• Educate, solicit input on neighborhoods and Communities of Interest</li><li>• Discuss, revise draft maps; discuss election sequencing</li><li>• Selection of final draft map and election sequencing</li><li>• Introduction of the Ordinance</li></ul>
<b>Adoption of the Ordinance</b> March 14, 2022	<ul style="list-style-type: none"><li>• Adopt final map via ordinance</li></ul>

# Redistricting Rules and Goals

## 1. Federal Laws

- ❑ Equal Population
- ❑ Federal Voting Rights Act
- ❑ No Racial Gerrymandering



## 2. California Criteria for Cities

1. Geographically contiguous
2. Undivided neighborhoods and “communities of interest”
3. Easily identifiable boundaries
4. Compact

**Prohibited:** “Shall not favor or discriminate against a political party.”

## 3. Other Traditional Redistricting Principles

- ❑ Respect voters’ choices / continuity in office
- ❑ Future population growth

# Defining Neighborhoods

---

**1<sup>st</sup> Question: What is your neighborhood?**

**2<sup>nd</sup> Question: What are its geographic boundaries?**

**Examples of physical features defining a neighborhood boundary:**

- Natural neighborhood dividing lines, such as highway or major roads, rivers, canals and/or hills
- Areas around parks or schools
- Other neighborhood landmarks

**In the absence of public testimony, planning records and other similar documents may provide definition.**



# Beyond Neighborhoods: Defining Communities of Interest

---

## 1<sup>st</sup> Question: What defines your community?

- Geographic Area, plus
- Shared issue or characteristic
  - Shared social or economic interest
  - Impacted by county policies
- Tell us “your community’s story”

## 2<sup>nd</sup> Question: Would this community benefit from being “included within a single district for purposes of its effective and fair representation”?

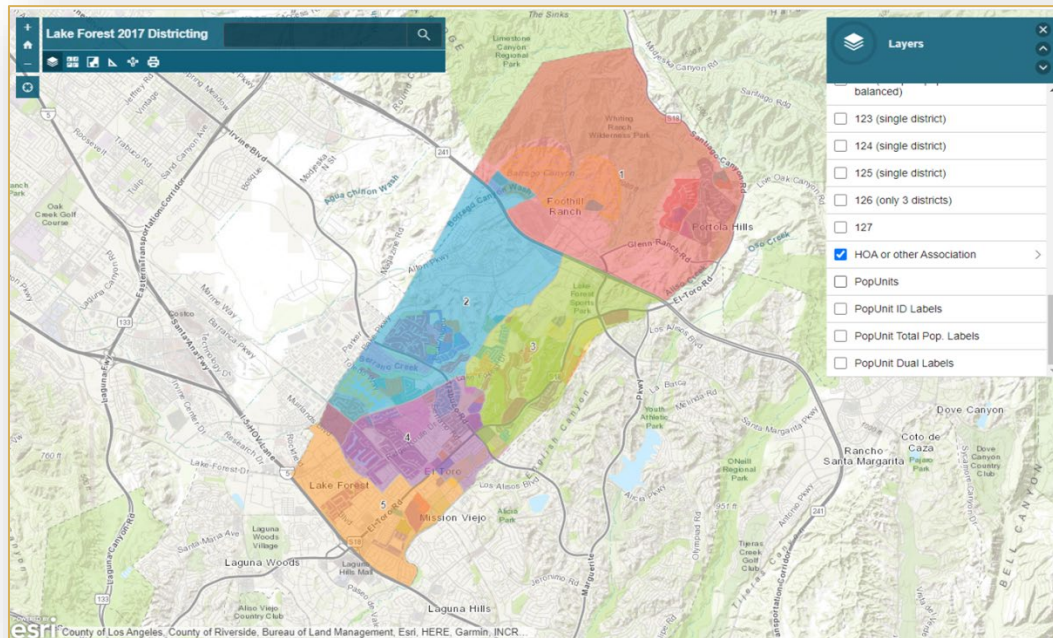
- Or would it benefit more from having multiple representatives?

Definitions of Communities of Interest may not include relationships with political parties, incumbents, or political candidates.

# Simple Map Review Tool

## Online Interactive Review Map

- ESRI's "ArcGIS Online" – similar to Google Maps in ease of use
- Used to review, analyze and compare maps, not to create them



# Your own mapping software?

---

**Feel free to submit using your own mapping software:**

- 1) A GIS Shapefile and/or a Census Block equivalency file (w/2020 Census Blocks);
- 2) A description of the choices and key points of your map; and,
- 3) Send to the City of Pacifica districting email address



# Public Mapping and Map Review Tools

---

- **Different tools for different purposes**
- **Different tools for different levels of technical skill and interest**
  - Simple “review draft maps” tool
  - Easy-to-use “Draw your neighborhood” tool
  - Paper- and Excel-based simple “Draw a draft map” tools
  - DRA2020 - online

Whether you use the powerful (but complicated) online mapping tool, Excel, the paper kit, or just draw on a napkin, we welcome your maps!



**In a 5-district map, each district must have about 7,735 residents.**

**The additional data fields can be used, where appropriate, to assist in identifying “communities of interest.”**

<i>City of Pacifica - Current Plan</i>							
Category	Field	1	2	3	4	5	Total
2020 Census	Total Population	7,742	7,710	7,657	7,763	7,802	38,674
	Population Deviation	7	-25	-78	28	67	145
	Pct. Deviation	0.09%	-0.32%	-1.01%	0.36%	0.87%	1.87%
Total Pop.	Hispanic/Latino	21%	18%	17%	18%	21%	19%
	NH White	22%	42%	59%	59%	61%	48%
	NH Black	4%	3%	2%	1%	1%	2%
	NH Asian/Pac.Isl.	49%	34%	19%	19%	14%	27%
	NH Native Amer.	1%	1%	1%	1%	1%	1%
Citizen Voting Age Pop	Total	6,085	5,778	5,875	6,208	5,825	29,770
	Hisp	19%	19%	14%	17%	13%	17%
	NH White	26%	47%	68%	65%	73%	56%
	NH Black	7%	3%	3%	1%	1%	3%
	Asian/Pac.Isl.	47%	29%	14%	15%	11%	23%
	Native Amer.	0%	0%	1%	0%	0%	0%
Education (among those age 25+)	hs-grad	43%	37%	37%	44%	42%	41%
	bachelor	29%	33%	25%	26%	27%	28%
	graduatedegree	12%	16%	27%	17%	16%	18%
Child in Household	child-under18	36%	29%	26%	29%	31%	30%
Pct of Pop. Age 16+	employed	71%	72%	71%	64%	67%	69%
Household Income	income 0-25k	7%	9%	7%	10%	3%	7%
	income 25-50k	9%	11%	11%	8%	9%	9%
	income 50-75k	10%	11%	11%	12%	15%	12%
	income 75-200k	52%	47%	47%	48%	54%	49%
	income 200k-plus	22%	22%	25%	22%	19%	22%
Housing Stats	single family	73%	69%	77%	87%	95%	80%
	multi-family	27%	31%	23%	13%	5%	20%
	rented	31%	41%	32%	25%	17%	29%
	owned	69%	59%	68%	75%	83%	71%

---

# Public Comments and Questions