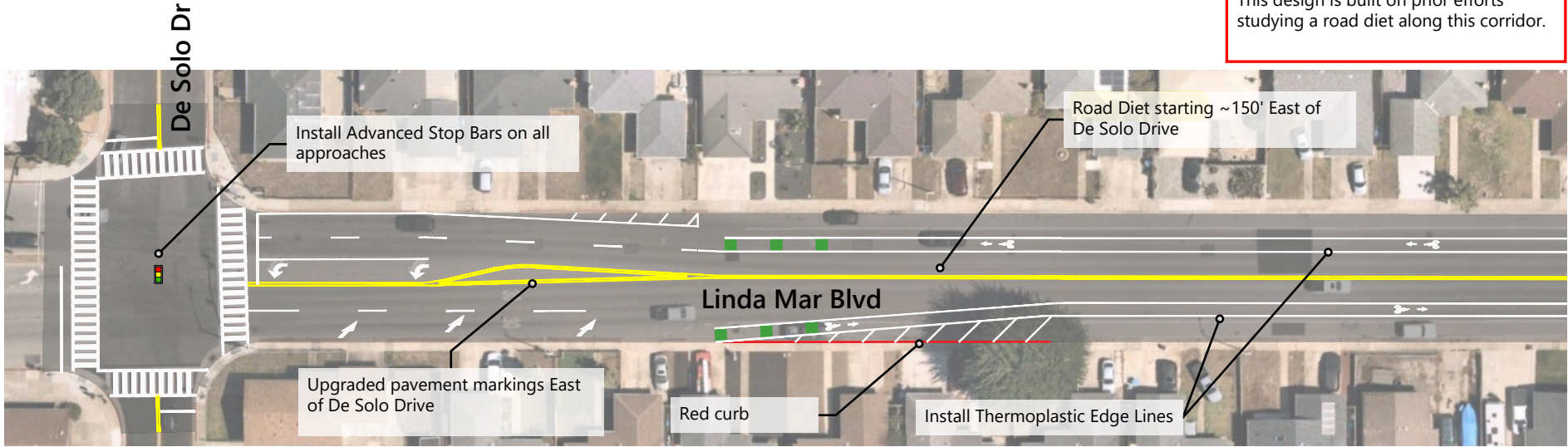


ATTACHMENT C

Note:
This design is built on prior efforts studying a road diet along this corridor.



1:100

Figure 1

Linda Mar Boulevard East of De Solo Drive

CADD FILE: N:\Projects\2022_Projects\SF22-1255.01_Pacific_LRP\CAD_Concepts\1255.01-LindaMar-Concept.dwg
Feb 17, 2023



CONCEPTUAL - NOT FOR CONSTRUCTION. ADDITIONAL DETAILED ANALYSIS AND ENGINEERING DESIGN REQUIRED.

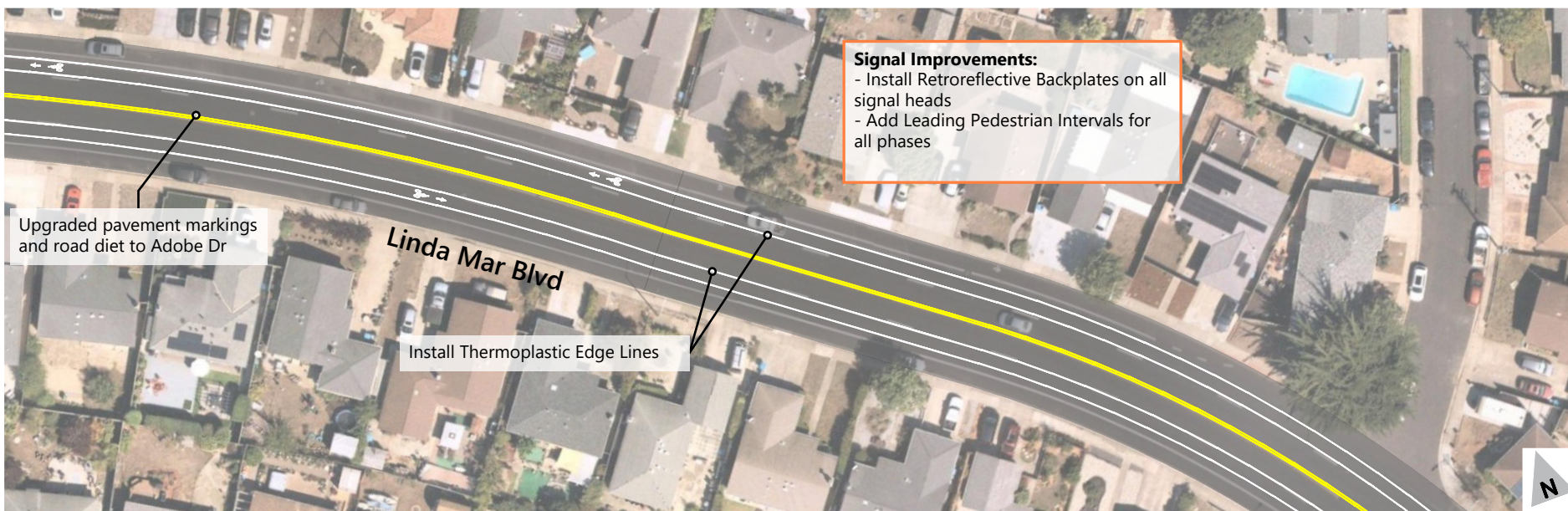
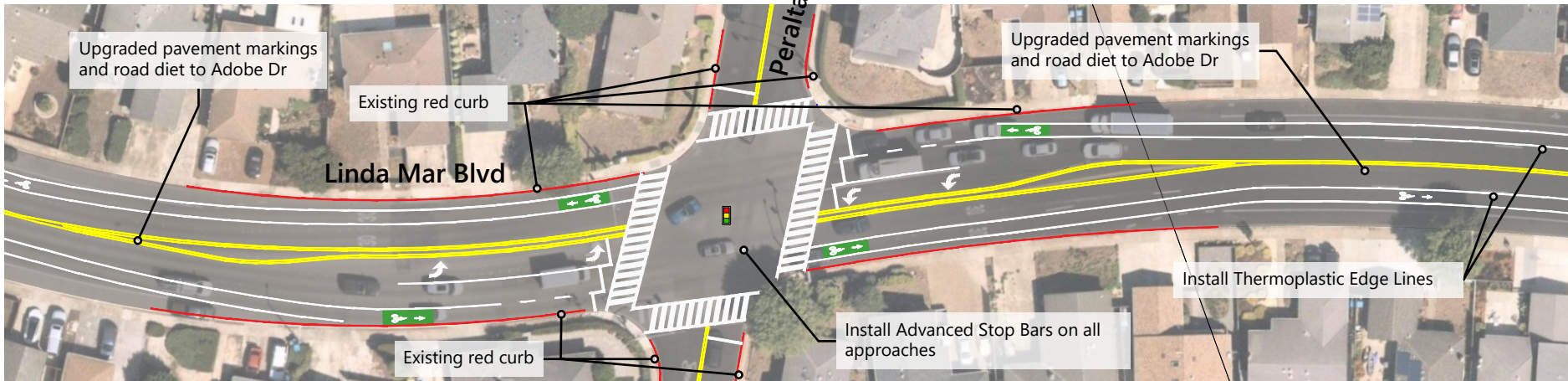
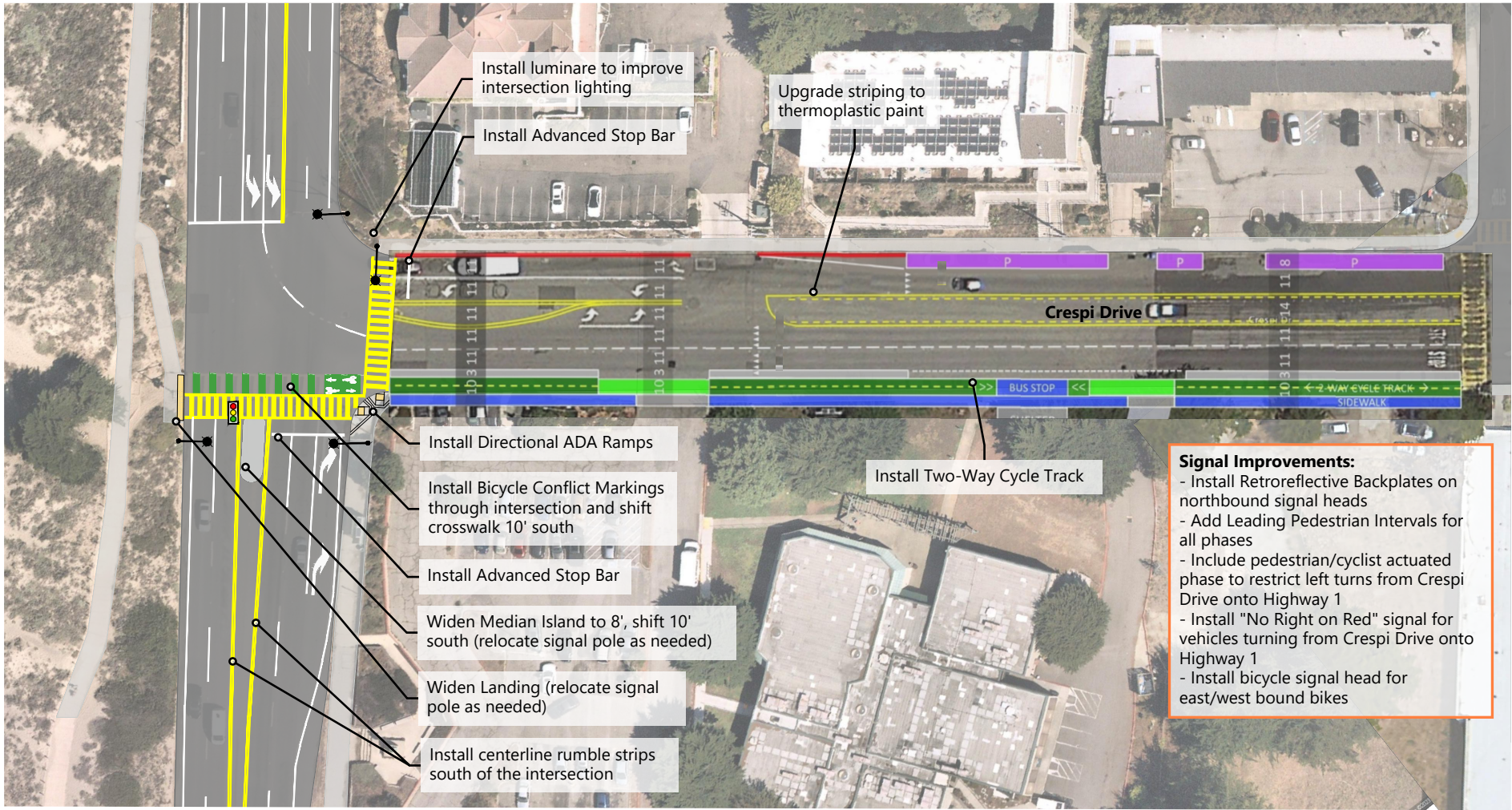


Figure 2
Linda Mar Boulevard/Peralta Road



CONCEPTUAL - NOT FOR CONSTRUCTION. ADDITIONAL
DETAILED ANALYSIS AND ENGINEERING DESIGN REQUIRED.

CADD FILE: N:\Projects\2022_Projects\SF22-1255.01_Pacific LRP\CAD_Concepts\1255.01-CrespiHwy1-Concept.dwg
Feb 27, 2023



N
1:70

Figure 1
Crespi Drive and Highway 1



CONCEPTUAL - NOT FOR CONSTRUCTION. ADDITIONAL DETAILED ANALYSIS AND ENGINEERING DESIGN REQUIRED.

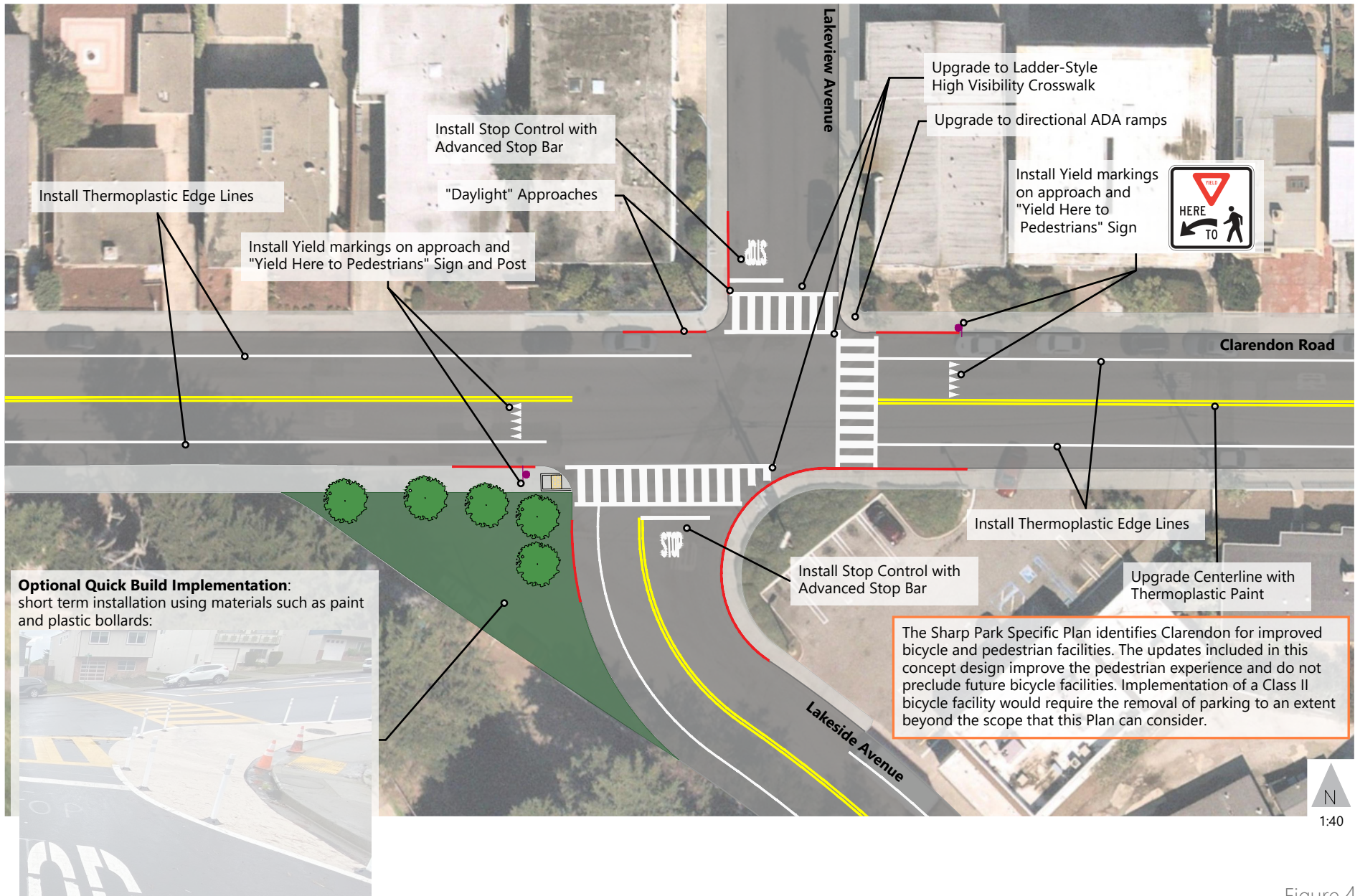


Figure 4

Clarendon Road and Lakeside Avenue/Lakeview Avenue



CONCEPTUAL - NOT FOR CONSTRUCTION. ADDITIONAL DETAILED ANALYSIS AND ENGINEERING DESIGN REQUIRED.

CADD FILE: N:\Projects\2022_P\Projects\SF22-1255.01_Pacific_LRP\CAD_Concepts\1255.01-ClarendonOverview-Concept.dwg
Feb 27, 2023

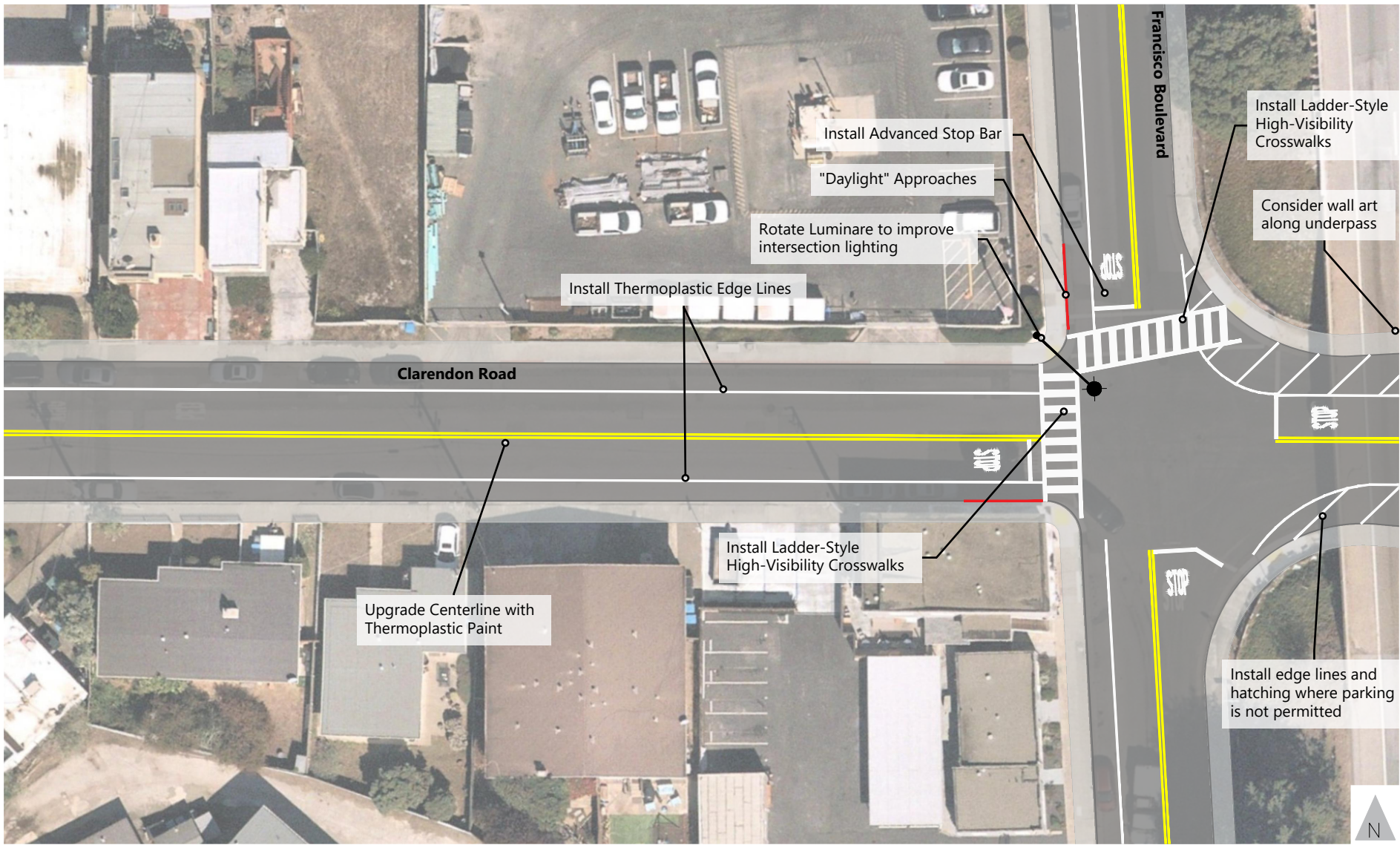


Figure 1
Clarendon Road and Francisco Boulevard



CONCEPTUAL - NOT FOR CONSTRUCTION. ADDITIONAL
DETAILED ANALYSIS AND ENGINEERING DESIGN REQUIRED.

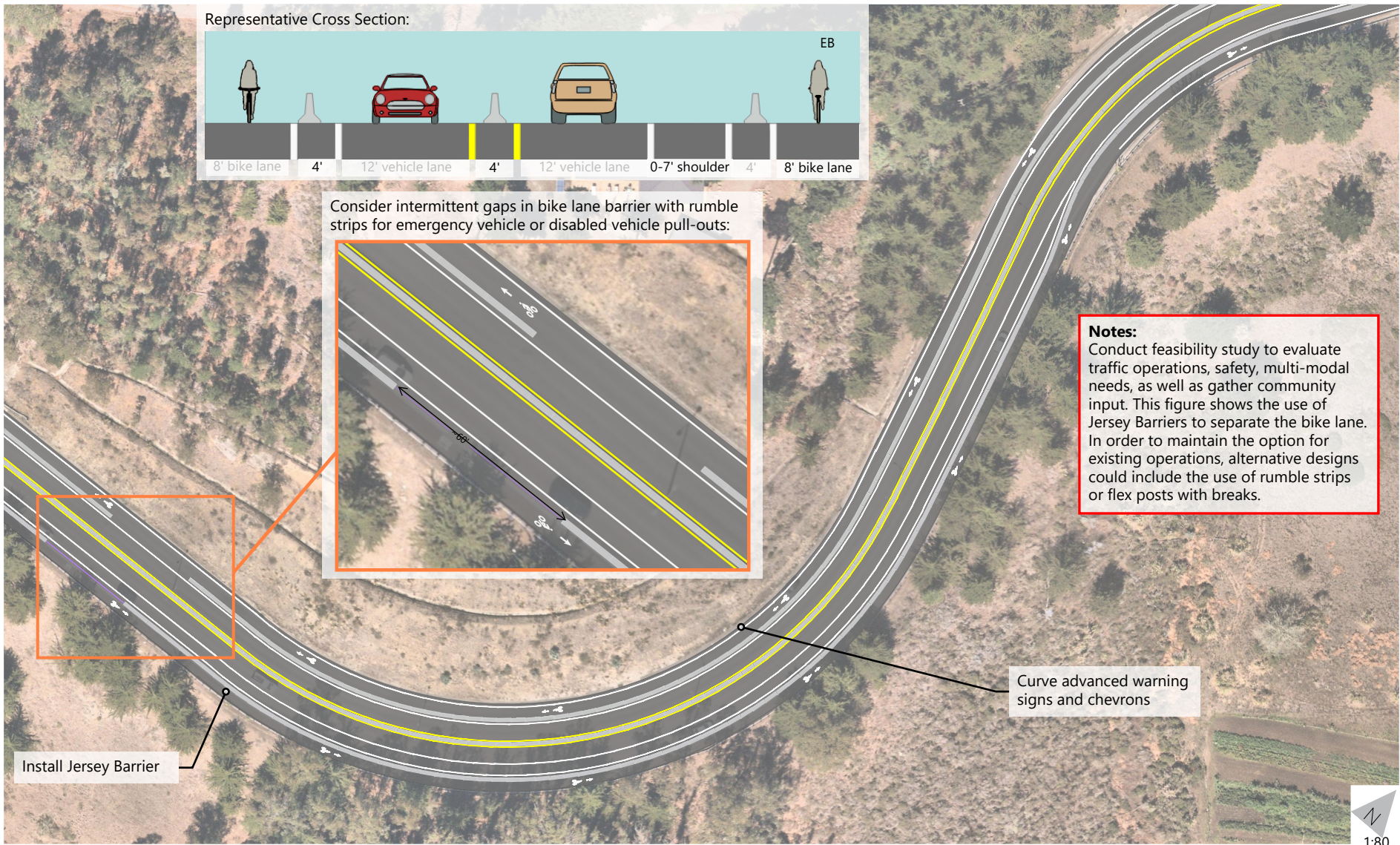


Figure 6

Sharp Park Road



CONCEPTUAL - NOT FOR CONSTRUCTION. ADDITIONAL DETAILED ANALYSIS AND ENGINEERING DESIGN REQUIRED.

CADD FILE: C:\Users\jkupfer\OneDrive - Fehr & Peers\Documents\1255.01 - FasslerHwy1 - Concept-v2.dwg
Feb 14, 2023

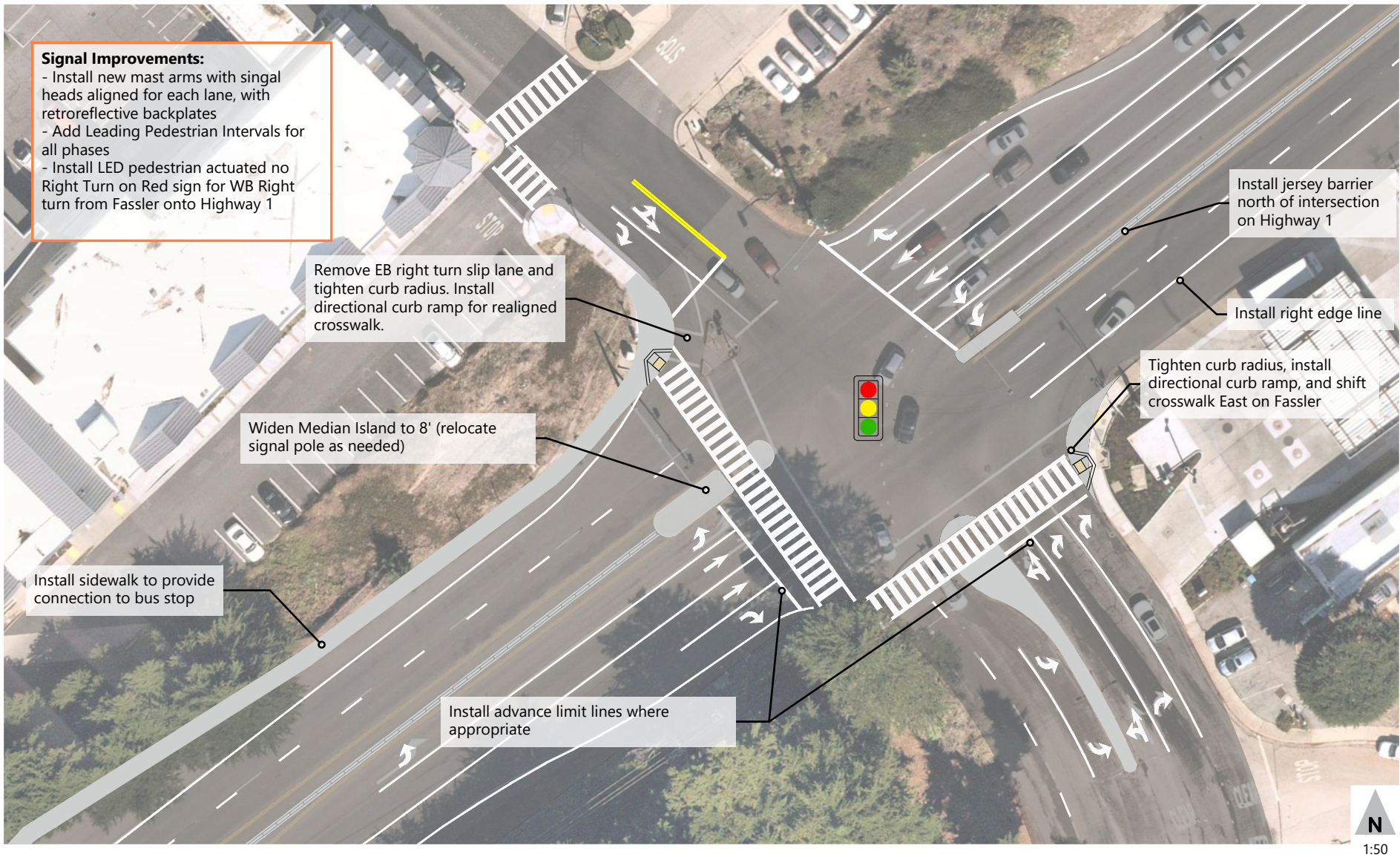


Figure 7
Fassler Avenue/Highway 1



CONCEPTUAL - NOT FOR CONSTRUCTION. ADDITIONAL
DETAILED ANALYSIS AND ENGINEERING DESIGN REQUIRED.