

Line Table: Alignments

Line #	Length	Direction	ALIGNMENT NAME
L7	17.89'	S26° 44' 03.28"E	ADA WALKWAY
L6	71.53'	S11° 43' 16.35"W	ADA WALKWAY
L5	42.47'	S06° 11' 50.18"W	ADA WALKWAY
L4	41.22'	S24° 02' 58.86"E	ADA WALKWAY
L3	25.87'	S41° 23' 02.59"E	ADA WALKWAY
L2	17.18'	S24° 20' 32.78"E	ADA WALKWAY
L1	21.49'	N84° 03' 30.69"E	ADA WALKWAY

Curve Table: Alignments

Curve #	Radius	Length	Delta	Alignment Name
C5	100.0'	67.12'	38°27'20"	ADA WALKWAY
C4	20.0'	9.41'	26°57'30"	ADA WALKWAY
C3	20.0'	6.05'	17°20'04"	ADA WALKWAY
C2	20.0'	5.95'	17°02'30"	ADA WALKWAY
C1	5.0'	6.25'	71°35'57"	ADA WALKWAY

LEGEND:

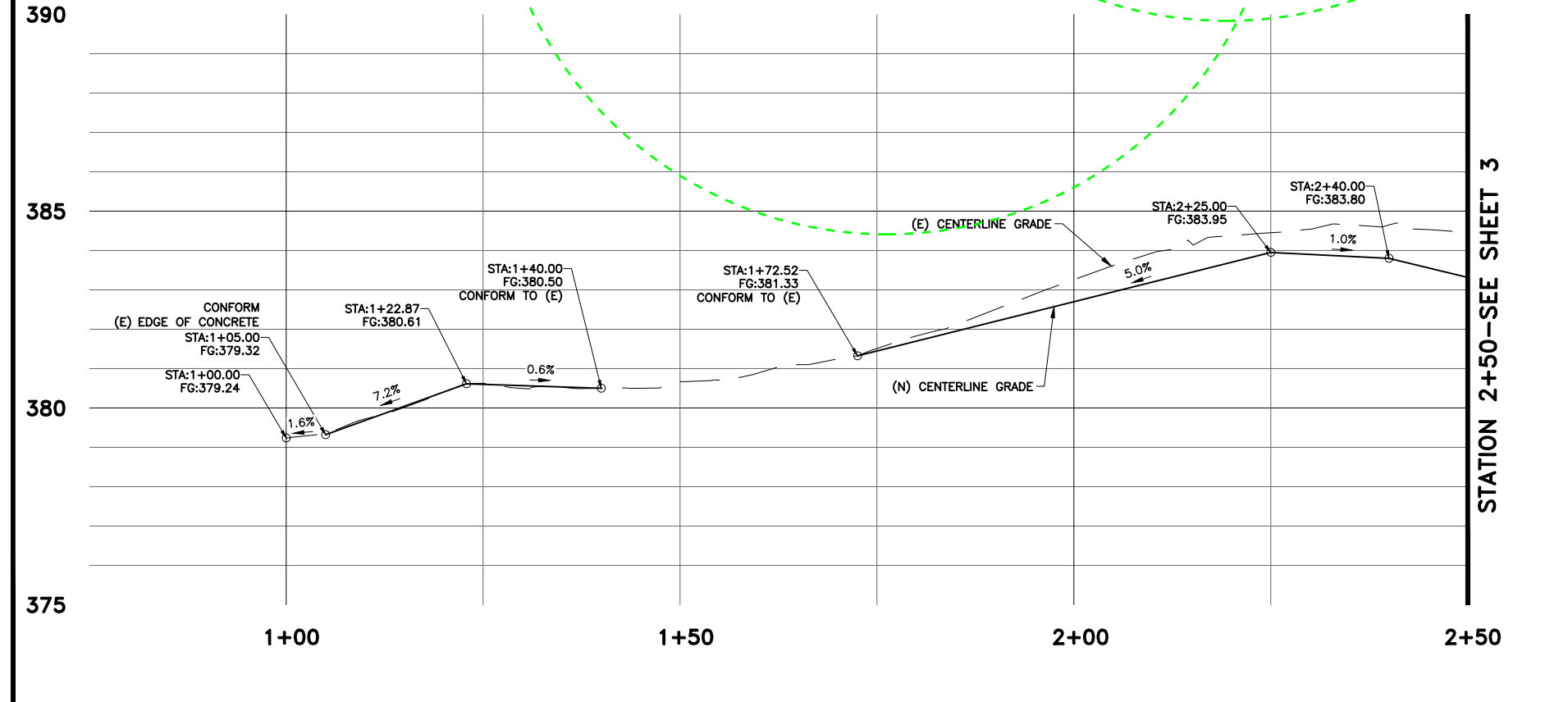
- PATHWAY PAVEMENT SECTION. SEE DETAIL 3, SHEET 4.
- REMOVE (E) AC PAVEMENT. NEW PATHWAY PAVEMENT SECTION. SEE DETAIL 3, SHEET 4.
- Tree Location
- Tree Removal
- Tree Protection Fencing
- 50ft TPZ Area

- PROJECT NOTES:**
- ADA RAMP HANDRAIL. SEE DETAILS 1 & 2, SHEET 4.
 - REMOVE WOOD FENCE TO CORNER.
 - CONFORM TO (E) PAVEMENT.
 - (E) PAVEMENT TO REMAIN.
 - REMOVE (E) WOOD HEADER AT CONFORM.
 - PLANE TREE ROOTS AS DIRECTED BY CITY ARBORIST.

Tree Management Experts
 Consulting Arborists
 Certified Arborists, Certified Tree Risk Assessors
 Contractor's License No. 885953, D-49 Tree Service
 (415) 606-3610 Roy@treemanagementexperts.com

Note: Not to Scale
 Tree Locations Estimated
 Unless Originally Surveyed
 By CSG Consultants

BASIS OF BEARINGS:
 THE LINE BETWEEN MAG NAIL #1 AND MAG #2 IS TAKEN AS S13° 59' 00.99"E.



PROFILE
 HORIZ. SCALE: 1" = 10'
 VERT. SCALE: 1" = 2'

DATE: _____

REVISIONS: _____

NO. _____

SCALE: AS SHOWN

DRAWN: ARS

DESIGNED: ES

APPROVED: ES

PREPARED BY: **CSG CONSULTANTS, INC.**
 550 PILGRIM DRIVE
 FOSTER CITY, CA 94404
 PHONE: (650) 522-2500
 FAX: (650) 522-2599

EMPLOYEE-OWNED

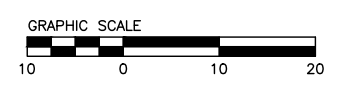
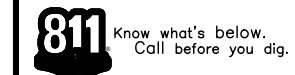
PREPARED FOR: **CITY OF PACIFICA**
 PUBLIC WORKS DEPARTMENT
 170 SANTA MARK AVENUE
 PACIFICA, CALIFORNIA

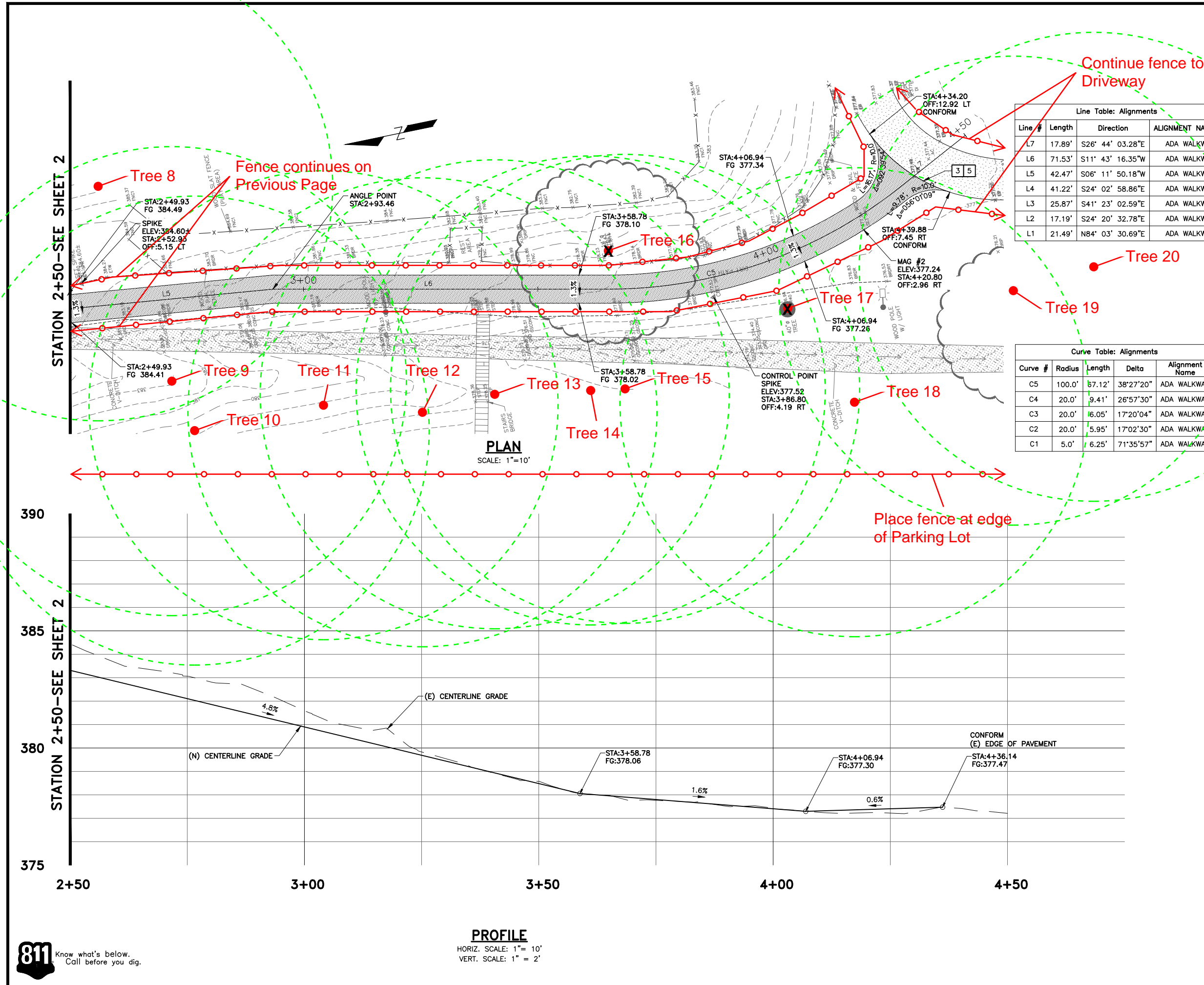
TITLE: **FRONTIERLAND PARK ADA IMPROVEMENTS GRADING PLAN & PROFILE ADA IMPROVEMENTS**

SHEET: **2 OF 5**

DATE: 7/24/2023

JOB#: 23.323





LEGEND:

- | ITEM | DESCRIPTION |
|------|--|
| | PATHWAY PAVEMENT SECTION. SEE DETAIL 3, SHEET 4. |
| | REMOVE (E) AC PAVEMENT. NEW PATHWAY PAVEMENT SECTION. SEE DETAIL 3, SHEET 4. |
| | Tree Location |
| | Tree Removal |
| | Tree Protection Fencing |
| | 50ft TPZ Area |

Line Table: Alignments

Line #	Length	Direction	ALIGNMENT NAME
L7	17.89'	S26° 44' 03.28"E	ADA WALKWAY
L6	71.53'	S11° 43' 16.35"W	ADA WALKWAY
L5	42.47'	S06° 11' 50.18"W	ADA WALKWAY
L4	41.22'	S24° 02' 58.86"E	ADA WALKWAY
L3	25.87'	S41° 23' 02.59"E	ADA WALKWAY
L2	17.19'	S24° 20' 32.78"E	ADA WALKWAY
L1	21.49'	N84° 03' 30.69"E	ADA WALKWAY

Curve Table: Alignments

Curve #	Radius	Length	Delta	Alignment Name
C5	100.0'	67.12'	38°27'20"	ADA WALKWAY
C4	20.0'	9.41'	26°57'30"	ADA WALKWAY
C3	20.0'	6.05'	17°20'04"	ADA WALKWAY
C2	20.0'	5.95'	17°02'30"	ADA WALKWAY
C1	5.0'	6.25'	71°35'57"	ADA WALKWAY

PROJECT NOTES:

- ADA RAMP HANDRAIL. SEE DETAILS 1 & 2, SHEET 4.
- REMOVE WOOD FENCE TO CORNER.
- CONFORM TO (E) PAVEMENT.
- (E) PAVEMENT, TO REMAIN.
- REMOVE (E) WOOD HEADER AT CONFORM.
- PLANE TREE ROOTS AS DIRECTED BY CITY ARBORIST.

Tree Management Experts
 Consulting Arborists
 Certified Arborists, Certified Tree Risk Assessors
 Contractor's License No. 885953, D-49 Tree Service
 (415) 606-3610 Roy@treemanagementexperts.com

Note: Not to Scale
 Tree Locations Estimated
 Unless Originally Surveyed
 By CSG Consultants

BASIS OF BEARINGS:

THE LINE BETWEEN MAG NAIL #1 AND MAG #2 IS TAKEN AS S13° 59' 00.99"E.

DATE	
REVISIONS	
NO.	
SCALE: AS SHOWN	
DRAWN: ARS	
DESIGNED: ES	
APPROVED: ES	

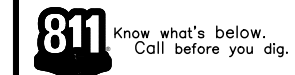
PREPARED BY: **CSG CONSULTANTS, INC.**
 550 PILGRIM DRIVE
 FOSTER CITY, CA 94404
 PHONE: (650) 522-2500
 FAX: (650) 522-2599

PREPARED FOR: **CITY OF PACIFICA**
 PUBLIC WORKS DEPARTMENT
 170 SANTA MARA AVENUE
 PACIFICA, CALIFORNIA

TITLE: **FRONTIERLAND PARK ADA IMPROVEMENTS GRADING PLAN & PROFILE ADA IMPROVEMENTS**

SHEET: **3 OF 5**

DATE: 7/24/2023
 JOB#: 23.323



PROFILE
 HORIZ. SCALE: 1" = 10'
 VERT. SCALE: 1" = 2'

