

City of Pacifica

Lower Linda Mar Rehabilitation and Repair Project C044

Community Meeting
May 30, 2024

Schaaf & Wheeler
CONSULTING CIVIL ENGINEERS

Introductions and Contacts



City of Pacifica

Project Manager

Daniel Patten, PE

(650) 922-7248

Construction Manager

Tanner Pacific

Jonathan Tristao, PE & Edgar Aguayo

(209) 277-0483

(650) 445-2077

Design Engineer

Ben Shick, PE

Schaaf & Wheeler

(707) 528-4848

Contractor

Jim Durkan

Ranger Pipelines

jim@rangerpipelines.com

(415) 822-3700

Contractor – Lateral Contact

Ranger Pipelines

(415) 848-3293

Schaaf & Wheeler
CONSULTING CIVIL ENGINEERS



Project Background

- Aging infrastructure in poor condition
 - Primarily vitrified clay pipe (VCP)
 - Constructed in the 1950s
- Sewer system is subject to significant infiltration and inflow (I&I)
 - Wet weather peaking factor of 15 to 20
- Recommended capital improvements in the City's Collection System Master Plan

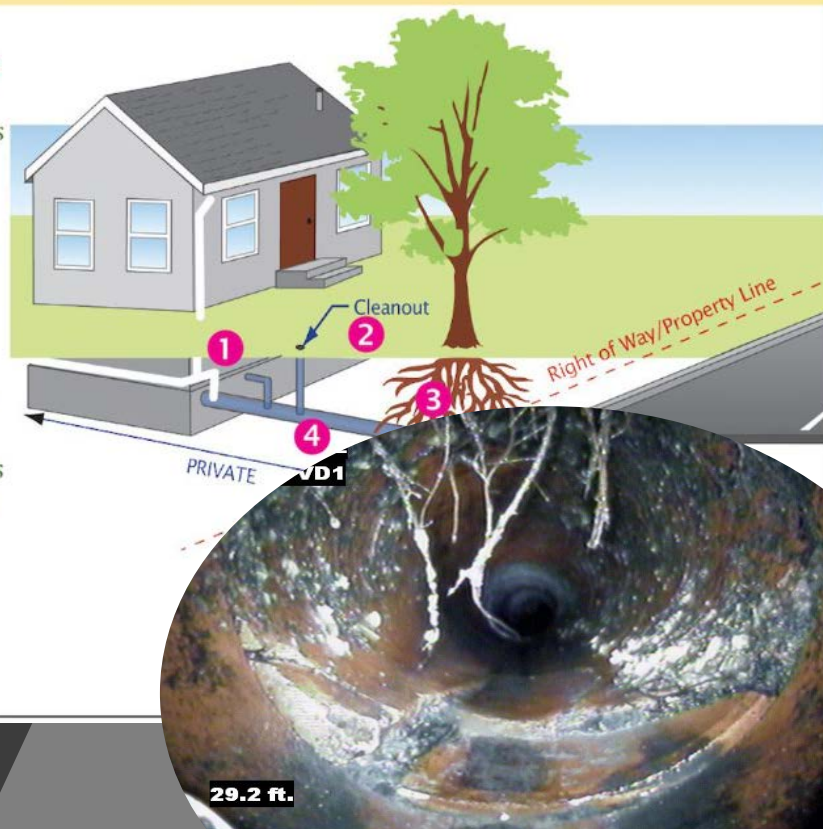
Common areas where inflow and infiltration occur

On Private Property:

1. Improper foundation or roof drain connections
2. Uncapped cleanout
3. Root intrusion
4. Breaks or open joints in service lateral

In Public System:

1. Breaks or open joints in lateral or main pipes
2. Faulty manhole covers
3. Open joints or cracks in service chamber



Project Goals



- Reduce risk of sanitary sewer spills (SSS's)
- Reduce infiltration and inflow (I&I)
- Reduce long-term maintenance
- Improve Public Health by Eliminating SSS's

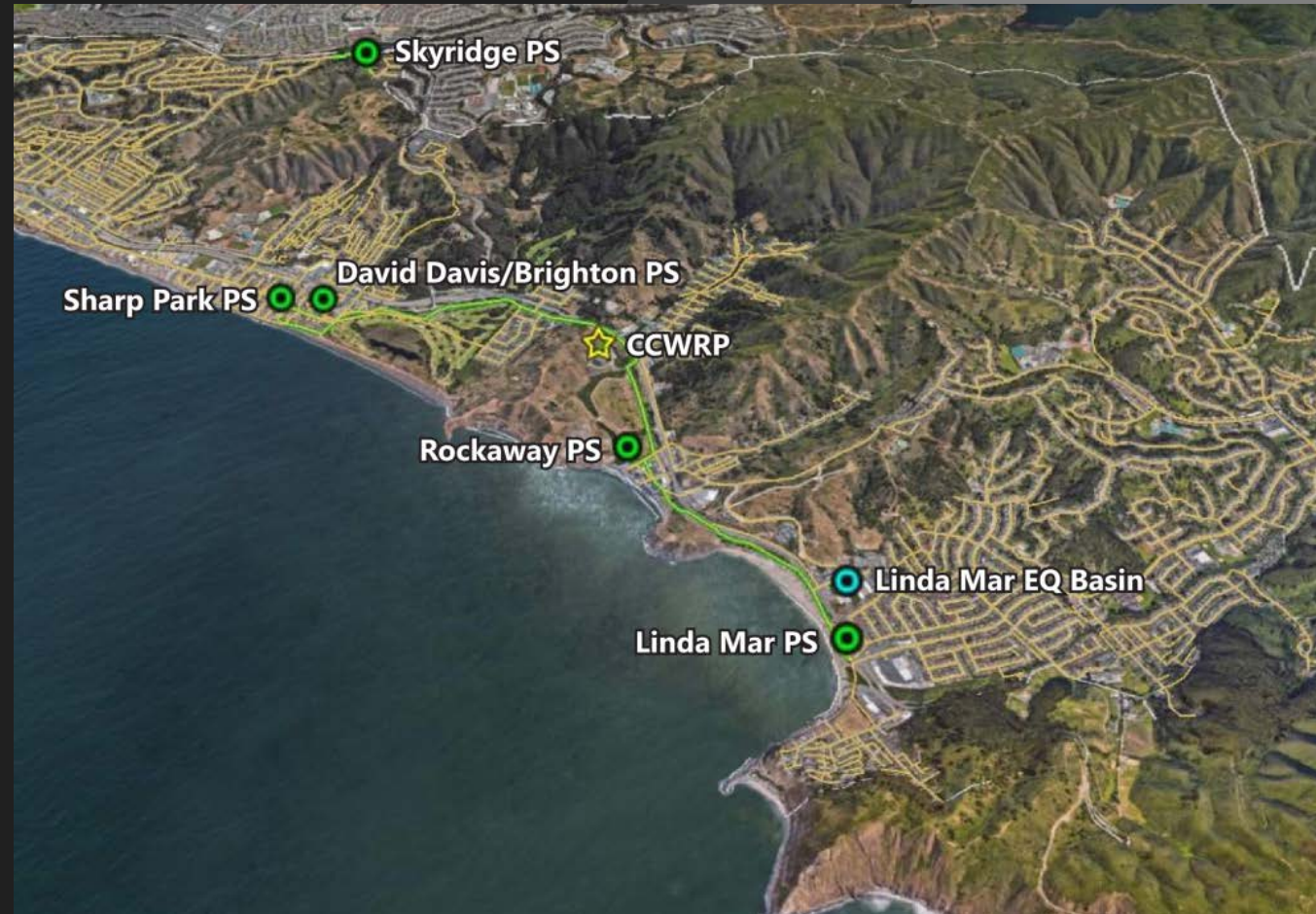


City of Pacifica Sewer System



City owns and maintains:

- 106 miles of sanitary sewer mains
- 5 sewer pump stations
- Calera Creek Water Recycling Plant (CCWRP)

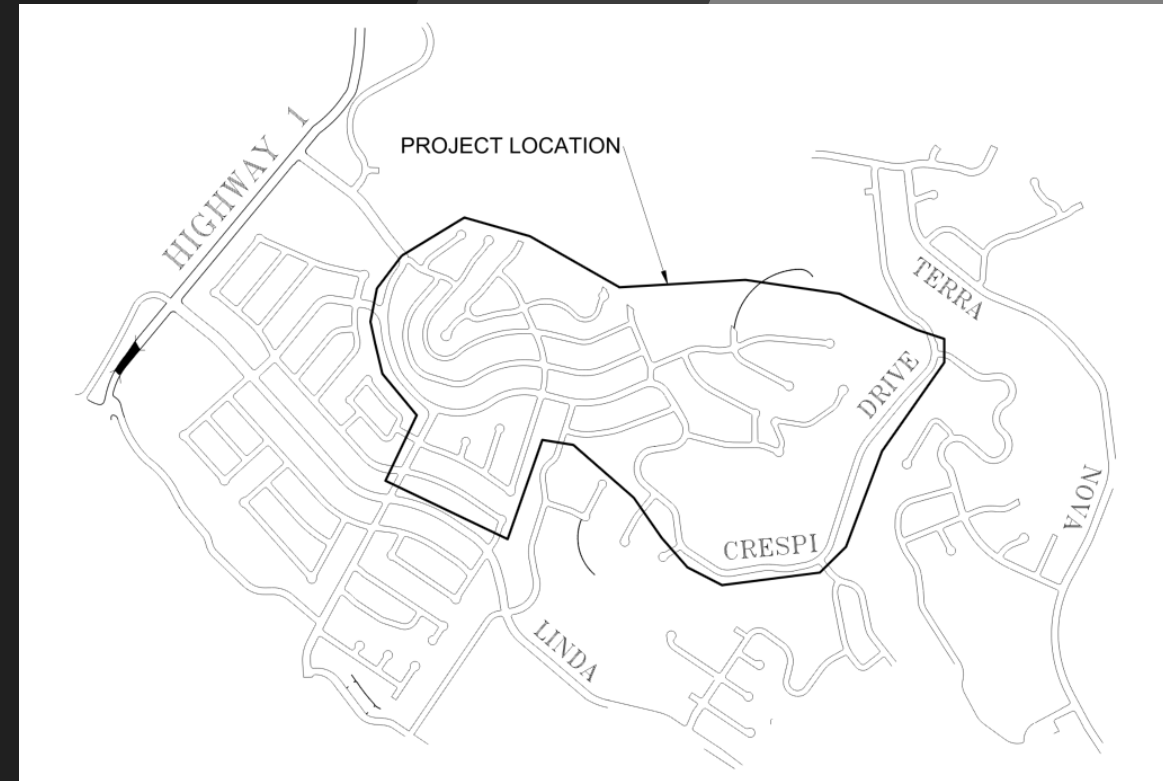


Schaaf & Wheeler
CONSULTING CIVIL ENGINEERS

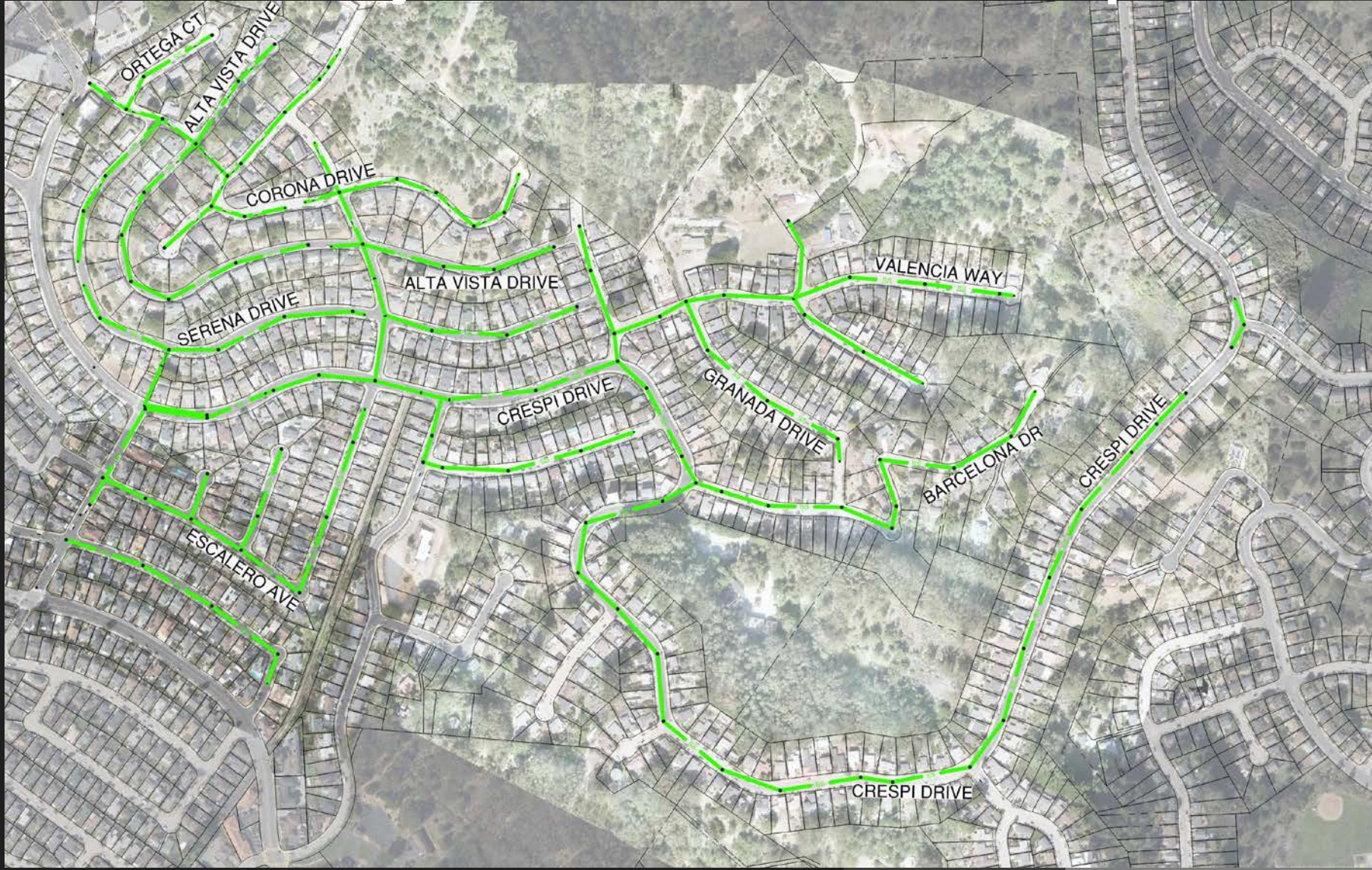
Project Overview



- Replacement of sanitary sewer mains
- Rehabilitation and replacement of sanitary sewer manholes
- Replacement of sanitary sewer lateral connections to the sewer main



Project Location Map



Schaaf & Wheeler
CONSULTING CIVIL ENGINEERS

Project Funding

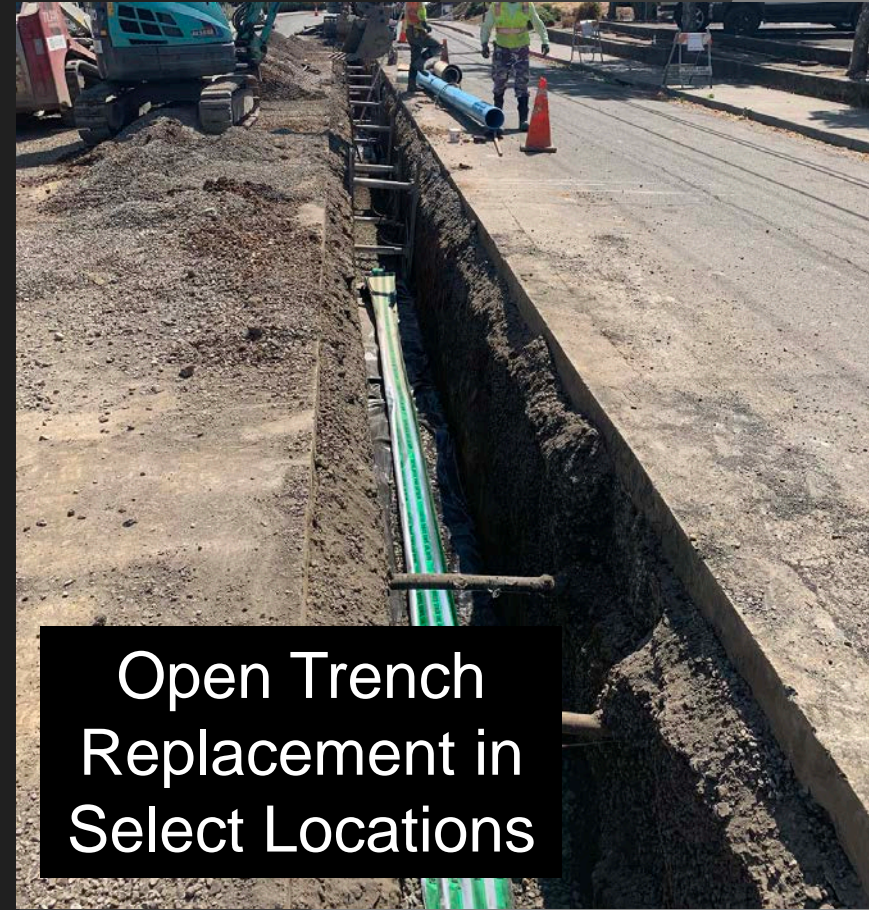


The Project will be financed through the California Infrastructure Bank \$21 Million Installment Sale Agreement which was approved by Council on May 8, 2023. This Agreement will finance wastewater system improvements projects which also includes the Ultraviolet Disinfection Replacement Project.

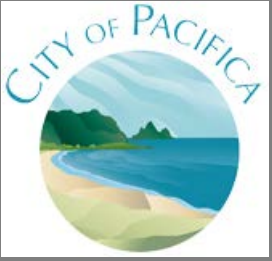
Construction Methods



Pipe Bursting



Open Trench Replacement in Select Locations



Temporary Impacts During Construction

- Construction Noise
- Traffic & Access
- May be Asked to Reduce Sewer Flows During Construction (1-day)
- Work Hours 8 AM to 5 PM, Monday through Friday
- Lane Closures on Crespi Drive and Peralta Road are Limited to 9 AM to 4PM

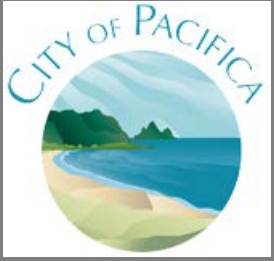


Schaaf & Wheeler
CONSULTING CIVIL ENGINEERS



Lateral Replacement Opportunity

- Sewer Laterals are Owned and Maintained by the Property Owner
- Most Laterals are Nearly 70 Years Old and are in Poor Condition
- Lateral Compliance Certificate Required When
 - Remodel of \$50k or Greater, Addition of any Plumbing Fixtures, or a Change in Water Service
 - Transfer of Property Ownership



Lateral Replacement Opportunity

- Costly Repairs and/or Replacement Should be Anticipated in the Near Future if Laterals have not been Replaced
- Laterals Have Significant Contribution to Infiltration and Inflow (I&I)
- City Arranged for Pre-Negotiated Rates for Property Owner to Replace Laterals During Construction
- Lateral Connection will be Replaced with Project

Schaaf & Wheeler
CONSULTING CIVIL ENGINEERS



Lateral Replacement Opportunity

- Typical Lateral Replacement Cost:

Arborist Report (Any Work Within 50' of Tree)	\$2,500
Permit and Inspection Fees	\$1,250
Lateral Replacement	\$7,500
Pavement Restoration	\$500
Pavement Cut Fees	\$640
TOTAL ESTIMATED COST	\$12,390

- Homeowner may be able to obtain \$2,000 lateral grant for replacement of lateral.



Lateral Replacement Opportunity

■ Pre-Negotiated Lateral Replacement Cost:

Arborist Report (Any Work Within 50' of Tree)	\$0
Permit and Inspection Fees	\$1,250
Lateral Replacement	\$4,000
Pavement Restoration	\$0
Pavement Cut Fees	\$0
Lateral Grant Program	-\$2,000
TOTAL ESTIMATED COST	\$3,250

■ City will provide 20-year compliance certificate

= \$9,140 in Savings

■ May be Additional Costs for Open Trench Replacement, Long Laterals, Additional Cleanouts, Tree Protection and Concrete Replacement

Schaaf & Wheeler
CONSULTING CIVIL ENGINEERS

Project Schedule



- Estimated Construction Schedule is from June 2024 through June 2025
- Work Along Each Pipe Segment is Anticipated to Take Approximately 1 Week

Contacts



City of Pacifica

Project Manager

Daniel Patten

(650) 922-7248

Contractor

Jim Durkan

Ranger Pipelines

jim@rangerpipelines.com

(415) 822-3700

Construction Manager

Tanner Pacific

Jonathan Tristao, PE & Edgar Aguayo

(209) 277-0483

(650) 445-2077

Contractor – Lateral Contact

Ranger Pipelines

(415) 848-3293

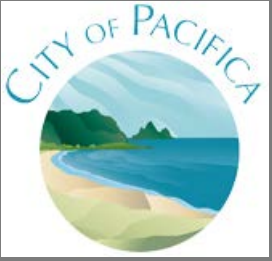
Design Engineer

Schaaf & Wheeler

Ben Shick

(707) 528-4848

Schaaf & Wheeler
CONSULTING CIVIL ENGINEERS



Questions?

Schaaf & Wheeler
CONSULTING CIVIL ENGINEERS