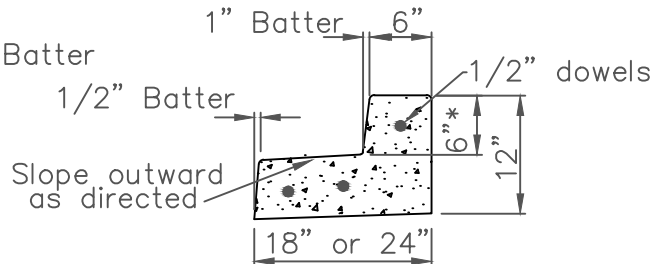
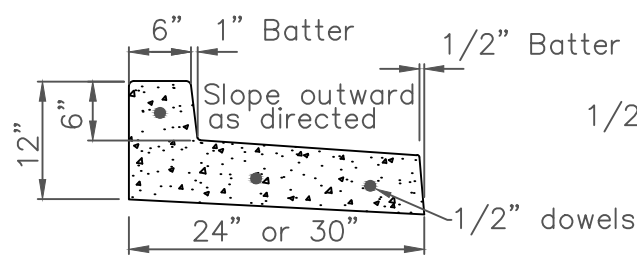


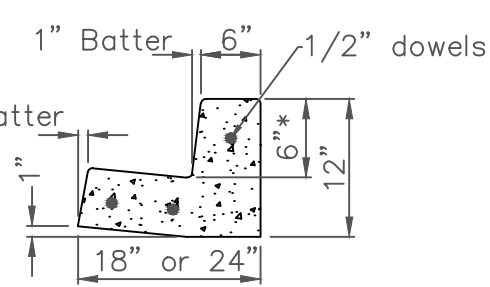
TYPE "A" CURB



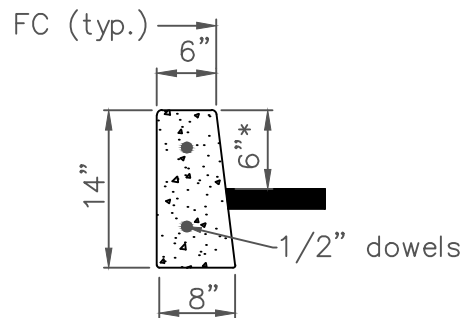
TYPE "B" CURB



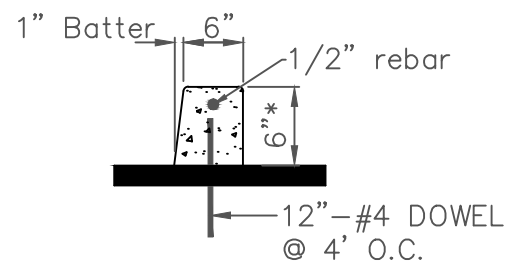
TYPE "C" CURB



TYPE "D" CURB

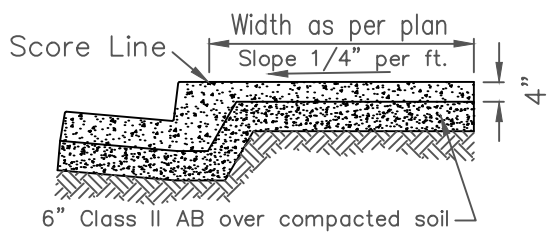


TYPE "E" CURB

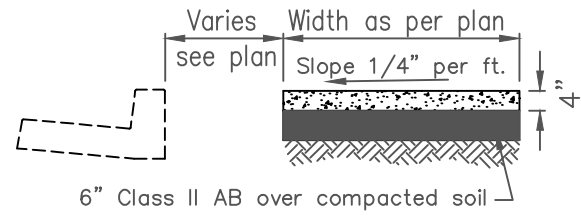


TYPE "F" CURB

4'-6" Residential, 7'-6" Commercial
or as approved otherwise



TYPE "A" SIDEWALK
POURED MONOLITHIC WITH CURB



TYPE "B" SIDEWALK
POURED SEPARATE FROM CURB

NOTE: See Drawing No. 101A for General Notes. * Curbs shall be 6" above flow line
See Drawing No. 103 for joint locations except as otherwise directed

CITY OF PACIFICA
DEPARTMENT OF PUBLIC WORKS
ENGINEERING DIVISION

STANDARD
CURB, GUTTER
& SIDEWALK

			AUG 2014
			DWG. NO. 101B
REV	DATE	BY:	