

New Pacifica Library

LAC Meeting 02

August 17 2016

AGENDA

- **Call to Order**
- **Approval of July 27, 2016 Meeting Minutes**
- **Oral Communication**
- Work plan and Schedule Review
- Draft Project and Process Goals
- Summary of Needs Assessments
- Library Building Program
- Project Next Steps
- Tours of New Library Tours
- Confirmation of Regular Meeting Dates
- Committee and Staff Communications
- Adjourn

AGENDA

- Call to Order
- Approval of July 27, 2016 Meeting Minutes
- Oral Communication
- **Work plan and Schedule Review**
- Draft Project and Process Goals
- Summary of Needs Assessments
- Library Building Program
- Project Next Steps
- Tours of New Library Tours
- Confirmation of Regular Meeting Dates
- Committee and Staff Communications
- Adjourn



PACIFICA LIBRARY SCHEMATIC DESIGN ARCHITECTURAL SERVICES DRAFT SCHEDULE



2016	AUGUST	SEPTEMBER	OCTOBER	NOVEMBER	DECEMBER	2017	JANUARY	FEBRUARY	MARCH
------	--------	-----------	---------	----------	----------	------	---------	----------	-------

TASK 1: PROJECT INITIATION

- Refine project schedule, work plan
- Confirm participation plan, schedule
- Review City, Library-provided info

TASK 2: 50% SCHEMATIC DESIGN

TASK 2A: UPDATE NEEDS ASSESSMENT + BUILDING AND SITE PROGRAM

- Review / update project parameters — e.g., site development vision/partners
- Review needs assessment findings, community profile/demographics
- Revisit draft building program

TASK 2B: SITE + BUILDING OPTIONS

- Two schematic design options
- Initiate cost model
- City Council and Planning Commission presentations

TASK 3: 100% SCHEMATIC DESIGN

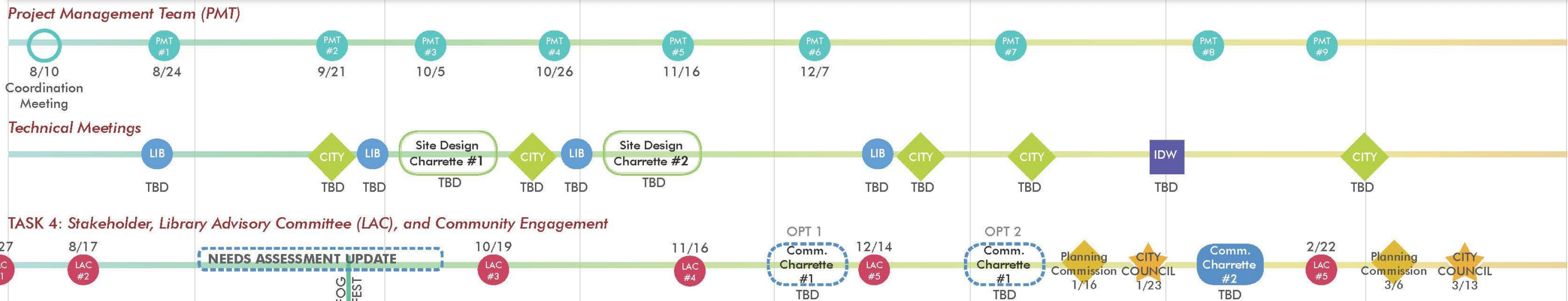
- Select and refine preferred SD option
- Integrated Design Workshop
- Finalize building program

FUTURE PHASES

- Schematic Design package — plans, elevations, outline specs, estimate of probable construction cost
- Hand-/computer-generated vignettes and graphics

DRAFT

PARTICIPATION PLAN



ALL DATES SUBJECT TO CHANGE

AGENDA

- Call to Order
- Approval of July 27, 2016 Meeting Minutes
- Oral Communication
- Work plan and Schedule Review
- **Draft Project and Process Goals**
- Summary of Needs Assessments
- Library Building Program
- Project Next Steps
- Tours of New Library Tours
- Confirmation of Regular Meeting Dates
- Committee and Staff Communications
- Adjourn

DESIGN GOALS: SITE DESIGN

- 21st Century Library
- Warm and Welcoming, a "Community Building" Sharp Park Neighborhood
- A Catalyst for Improving Palmetto Avenue
- A Cornerstone (anchor for Palmetto Avenue)
- Integration of Public Art
- Convenient Parking

NEW PACIFICA LIBRARY

NAME: Trish Shall ASPIRATIONS FOR THE LIBRARY

MOST MEMORABLE LIBRARY EXPERIENCE: Seeing my kids' eyes light up when they first got library card

1. Ample areas for programs (esp. children's).
2. Welcoming management
3. Community meeting
4. Modern computer tech
5. Anchor for development

NAME: Karen Ervin ASPIRATIONS FOR THE LIBRARY

MOST MEMORABLE LIBRARY EXPERIENCE: Reading a full page & specific articles in an expensive medical collection

1. Knowledge
2. Convenient parking.
3. Welcoming atmosphere.
- 4.
- 5.

NAME: Julie Franking ASPIRATIONS FOR THE LIBRARY

MOST MEMORABLE LIBRARY EXPERIENCE: walking in the front door of the San Mateo Public Library after it was built, before it opened to the public when I worked there

1. Community Treasure, sense of pride
2. safe fun exciting spaces for teens & kids
3. welcoming engaging spaces, programs & services for seniors
4. being able to say "yes we have that" when patrons ask for books, movies, music, etc.
5. provide equal access to technology for all Pacificans

NAME: KAREN ERVIN ASPIRATIONS FOR THE LIBRARY

MOST MEMORABLE LIBRARY EXPERIENCE: STORY TIME w/CHILDREN SPEND

1. A PLACE TO FIND
2. SANCTUARY SAFE PLACE
3. WELCOMING
4. KNOWLEDGE & EDUCATION
5. ENHANCE QUALITY OF LIFE

PLACE YOUR TAG HERE

TEAM NAME:

BUILDING OUR FUTURE!

TOP 5

ASPIRATIONS:

1. WELCOMING

2. SAFE PLACE

3. CONVENIENT ACCESS FOR PEOPLE TO MATERIALS

4. 21ST CENTURY LIBRARY

5. CIVIC ANCHOR OF PRIDE

DESIGN GOALS: BUILDING DESIGN

- Pride of the community, "Community Treasure", A community asset
- Modern Sustainable Design
- Exciting, engaging and safe place for kids and teens
- Welcoming and engaging spaces for seniors and adults
- Integration of Public Art
- Comfortable seating areas

NEW PACIFICA LIBRARY

TEAM NAME:

TEAM 3

PLACE YOUR TAG HERE

DRAFT

TOP 5

ASPIRATIONS:

NAME: ASPIRATIONS FOR THE LIBRARY

DAVID LEAL

MOST MEMORABLE LIBRARY EXPERIENCE:

OFFERED SHOULDER MESSAGE AT SHARP PARK LIBRARY

1. RESIDENT AND VISITOR DESTINATION
2. MEETING SPACE (FACILITY PLAYING)
3. ANCHOR FOR SHARP PARK NEIGHBORHOOD
4. TECHNOLOGY
- 5.

NAME: ASPIRATIONS FOR THE LIBRARY

MOST MEMORABLE LIBRARY EXPERIENCE:

A great program for the day of the dead featuring mariachis all over the library.

1. A warm and inviting "Community" space
2. Separate areas for kids, teens, seniors
3. Large collection of book & media
4. Comfortable seating areas
5. Variety of meeting rooms of varying sizes.

NAME: ASPIRATIONS FOR THE LIBRARY

ERIC RUCHAMES

MOST MEMORABLE LIBRARY EXPERIENCE:

4 YEARS ON PLF BOARD

1. PROVIDE SERVICE TO COMMUNITY PROGRAMING
2. CREATE NEW SPACE
3. ECONOMIC ENGINE
4. BRING SUCCESS - MAKING THINGS POSITIVE HAPPEN IN PACIFICA
- 5.

NAME: ASPIRATIONS FOR THE LIBRARY

Cindy Abbott

MOST MEMORABLE LIBRARY EXPERIENCE:

Getting lost & finding treasures in the stacks in college

1. Community Gathering Place
2. Access for ALL AGES
3. Modernization incl. PUBLIC ART
4. Sustainable Design
5. Anchor on Palmetto

1. Warm welcoming community gathering space

2. Anchor on Palmetto / SHARP PARK

3. Program space for all ages
sufficient flexible space

4. COMMUNITY PRIDE
Positive Collaboration

5. Modern Sustainable Design

PROGRAMMING GOALS: NEW PACIFICA LIBRARY

- A destination for both residents and visitors, “Economic Engine”
- A Place for Civic and Community Events
- Enhance Quality of Life...
- Access to knowledge, collections, education, information and resources, both printed and digital
- Technology access, resources and education for all ages
- Designated services and programs to serve needs of kids, teens, seniors, a safe place for everyone
- Community hub, a variety of meeting spaces for individuals and community programming
- Continuing education (supplemental education)
- Community asset
- Flexible

NAME: Vanessa Powers
MOST MEMORABLE LIBRARY EXPERIENCE: ...
ASPIRATIONS FOR THE LIBRARY
1. community building/art
2. ...
3. elevate ...
4. ...
5. career building workshops

NAME: Ellen ...
MOST MEMORABLE LIBRARY EXPERIENCE: ...
ASPIRATIONS FOR THE LIBRARY
1. ...
2. ...
3. A community asset
4. Heavily used
5. Teens are drawn to ...

NAME: Posie Tejada
MOST MEMORABLE LIBRARY EXPERIENCE: ...
ASPIRATIONS FOR THE LIBRARY
1. A positive ...
2. Can host civic/community events
3. Provide resources for seniors, including tech instruction
4. Offer high-tech programs for kids (movie-making, 3D printing projects, etc.)
5. Serve as a community hub

NAME: Anne-Nanie
MOST MEMORABLE LIBRARY EXPERIENCE: ...
ASPIRATIONS FOR THE LIBRARY
1. welcoming
2. a space for everyone
3. beautiful (pride of community)
4. ...
5. Flexible - able to grow & change

NAME: Tom Clifford
MOST MEMORABLE LIBRARY EXPERIENCE: ...
ASPIRATIONS FOR THE LIBRARY
1. A Clean Well Litged Place for Books & People
2. Kids Area
3. COMPUTER Access for all
4. A Place to Hold Meetings
5. Corner Stone for Palmetto

TEAM NAME: PACIFICANS

TOP 5 ASPIRATIONS:

1. Warm, welcoming place for civic/community events
2. tech access, resources & education for all ages
3. designated areas to serve needs of kids, teens, seniors, etc.
4. community hub / cornerstone
5. workshop / supplemental education

AGENDA

- Call to Order
- Approval of July 27, 2016 Meeting Minutes
- Oral Communication
- Work plan and Schedule Review
- Draft Project and Process Goals
- **Summary of Needs Assessments**
- Library Building Program
- Project Next Steps
- Tours of New Library Tours
- Confirmation of Regular Meeting Dates
- Committee and Staff Communications
- Adjourn

FACILITY ASSESSMENTS:

11/23/15

SHARP PARK

Physical Condition Summary:



ACCESSIBILITY	LIFE-SAFETY	BUILDING SYSTEMS	ARCHITECTURAL	FUNCTIONALITY
Non-Conforming Parking	Insufficient Fire Life-Safety	Insufficient Ventilation System	Uneven Floors	Inadequate Storage
Inaccessible Entries	Under-supported Cantilever	Outdated Lighting Systems	Worn Finishes	Undersized Spaces for Collections
Inaccessible Paths of Travel	Non-Compliant Structure	Recently Updated Plumbing	Poor Acoustics	Inadequate Seating
Non-Conforming Areas	Excessive Openings in Structural Walls		Damaged/Discontinued Hardware	Inflexible Spaces
Inaccessible Exits	Under-supported soffits		Underutilized Views	Undersized Staff Space
Non-Conforming Devices/Hardware	Unanchored Tall Shelving			

Building is inaccessible

Building does not meet Life-Safety Standards

Systems need upgrades

Multiple issues from deferred maintenance to design problems

Library is undersized for current and future needs

FACILITY ASSESSMENTS:

11/23/15

SHARP PARK

Could the Sharp Park Site, either through an addition or a new building, be used for a new 34,000 square foot library?



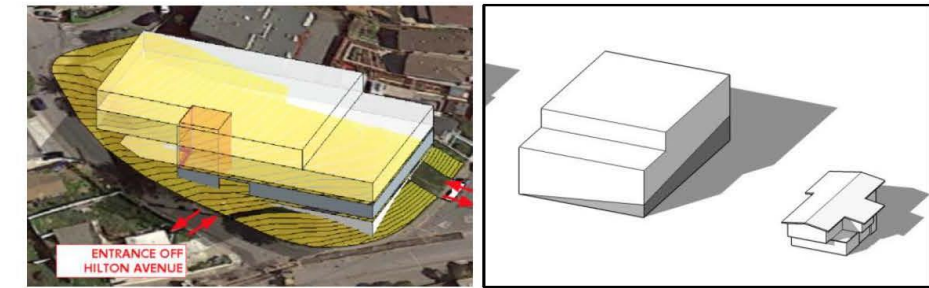
FUNCTIONALITY:

- Building is too small for current and future needs



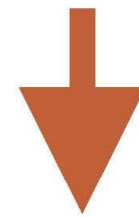
BUILDING CONDITION:

- Overall poor condition
- Multiple code-compliance problems would require serious renovations



SITE CAPACITY:

- The site could fit a 4 story, 34,000sf library with underground parking



The current building cannot be expanded for an addition, and though the site could support a new larger library, the character of the new library + parking structure would not “fit” with its surroundings and would very expensive due to 2-levels of parking below the structure

FACILITY ASSESSMENTS:

11/23/15

SANCHEZ

Physical Condition Summary:



ACCESSIBILITY	LIFE-SAFETY	BUILDING SYSTEMS	ARCHITECTURAL	FUNCTIONALITY
Non-Conforming Parking	Insufficient Fire Life-Safety	Poorly Integrated Telecom Upgrades	Worn Finishes	Inadequate Storage
Non-Conforming Areas	Potential Structural Deficiencies	Recently Updated HVAC	Damaged Window Screen	Undersized Spaces for Collections
Non-Conforming Devices/Hardware	Unanchored Tall Shelving	Recently Updated Plumbing	Damaged Hardware	Inadequate Seating
	Qualifies as a Benchmark Building	Inefficient Lighting Systems	General Good Condition	Inadequate Program Spaces
		Insufficient Air Circulation		Undersized Entry/Service Space
				Undersized Staff Space
Building is mostly accessible	Building is considered structurally Life-Safe	Some systems require upgrades	Finishes need replacement, but the building is in decent condition	Library is undersized for current and future needs

FACILITY ASSESSMENTS:

11/23/15

SANCHEZ

Could the Sanchez Site be used for a new 34,000 square foot library?



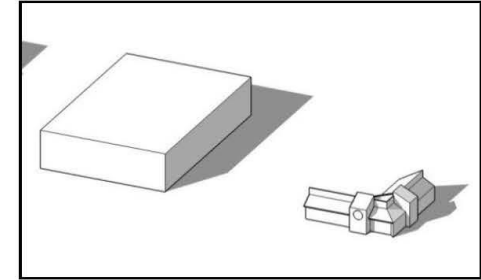
FUNCTIONALITY:

- Building is too small for current and future needs
- Site is isolated from Pacifica's population centers



BUILDING CONDITION:

- Some upgrades required
- Structurally good condition



SITE CAPACITY:

- Site is large enough for a 34,000sf library and required parking



An addition to the current building, or a new building on the current site, could be viable in regards to site capacity, but community access would remain limited.

PACIFICA LIBRARY NEEDS ASSESSMENT FINDINGS

ANDERSON BRULE ARCHITECTS – 6/10/11

- Combine existing libraries into a single facility to maximize service while minimize costs
- Expand collections, seating
- Expand programming
- Improve visibility, accessibility
- Provide current best-practice technology
- Provide a range of spaces, from group study rooms to a multi-purpose community room
- Ample parking

CURRENT AND PROPOSED SERVICE LEVELS

ANDERSON BRULE ARCHITECTS – 6/10/11

(PART 1)

	CURRENT LIBRARIES	NEW LIBRARY	2011 CURRENT BEST PLANNING PRACTICE
			COMMUNITIES 35,000 - 50,000
POPULATION	42,254 IN 2009/10	45,500 IN 2030	
COLLECTION	81,125 BOOKS + MEDIA	110,000 - 136,500 BOOKS + MEDIA	
	1.9 VOLUMES PER CAPITA	2.4 - 3.0 VOLUMES PER CAPITA	2.25 - 2.6
	69,600 BOOKS + MEDIA Adjusted for redundancy		
	1.7 VOLUMES PER CAPITA		
SEATING	84 SEATS	182 - 205 SEATS	
	2 SEATS PER 1,000 PEOPLE	4.0 TO 4.5 SEATS PER 1,000 PEOPLE	4.0 - 5.0

CURRENT AND PROPOSED SERVICE LEVELS

ANDERSON BRULE ARCHITECTS – 6/10/11

(PART 2)

GROUP STUDY/ COLLABORATION SPACE	0 SEATS / 0 ROOMS	24 - 40 SEATS / 4 -5 ROOMS	24 - 40 SEATS / 4 - 5 ROOMS
PUBLIC COMPUTERS	21 WORKSTATIONS	40 - 50 WORKSTATIONS + 20 LAPTOPS FOR IN-LIBRARY USE	
	0.5 COMPUTERS PER 1,000 PEOPLE	1.3 - 1.5 COMPUTERS PER 1,000 PEOPLE	1.0 - 1.5
TEEN SPACE	150 SF (Shared with magazine browsing)	1,000 - 1,150 SF	
DIGITAL LAB	0 SF	400 - 500 SF	
COMMUNITY MEETING ROOMS	60 SEATS / 1 ROOM	150 - 225 SEATS / 2 - 3 ROOMS	150 - 200+ SEATS
CHILDREN'S PROGRAMMING (DESIGNATED)	0 SEATS	35 - 40 FLOOR SEATS	35 - 75+
SQUARE FEET OF BUILDING SPACE	11,211 SF*	33,400 - 34,800 SF	
	0.27 SF PER CAPITA	0.73 - 0.76 SF PER CAPITA	0.6 - 0.8+
* SHARP PARK = 7,082 SF SANCHEZ = 4,129 SF			

AGENDA

- Call to Order
- Approval of July 27, 2016 Meeting Minutes
- Oral Communication
- Work plan and Schedule Review
- Draft Project and Process Goals
- Summary of Needs Assessments
- **Library Building Program**
- Project Next Steps
- Tours of New Library Tours
- Confirmation of Regular Meeting Dates
- Committee and Staff Communications
- Adjourn

LIBRARY BUILDING PROGRAM SUMMARY

~35,000 SF

4
P
U
O
R
G
Project Delivery
Design Excellence
People Place Partnership

EXPLORE
BROWSE
INTERACT



CHILDREN'S
LEARN
PLAY



STUDIO
CREATE
TINKER



ADULT
DISCOVER
INSPIRE



COLLABORATE
GATHER
SHARE



COMMUNITY
LOCAL
HISTROY



QUIET
FOCUS
REFLECT



MEET
FORUM
ENGAGE



INFORM
SUSTAINABLE
ADAPT



TEENS
CONNECT
STUDY



HUB
INNOVATE
DESIGN



GARDEN
ACTIVE
OPEN



SERVICE
FRIENDLY
CONVENIENT



EXPLORE

BROWSE

INTERACT



4

P

U

O

R

G

Project Delivery

Design Excellence

People Place Partnership

EXPLORE

BROWSE

INTERACT



EXPLORE

BROWSE

INTERACT



ADULT

DISCOVER

INSPIRE



4

P

U

O

R

G

Project Delivery

Design Excellence

People Place Partnership

ADULT

DISCOVER

INSPIRE



4

Project Delivery

P

Design Excellence

U

People Place Partnership

O

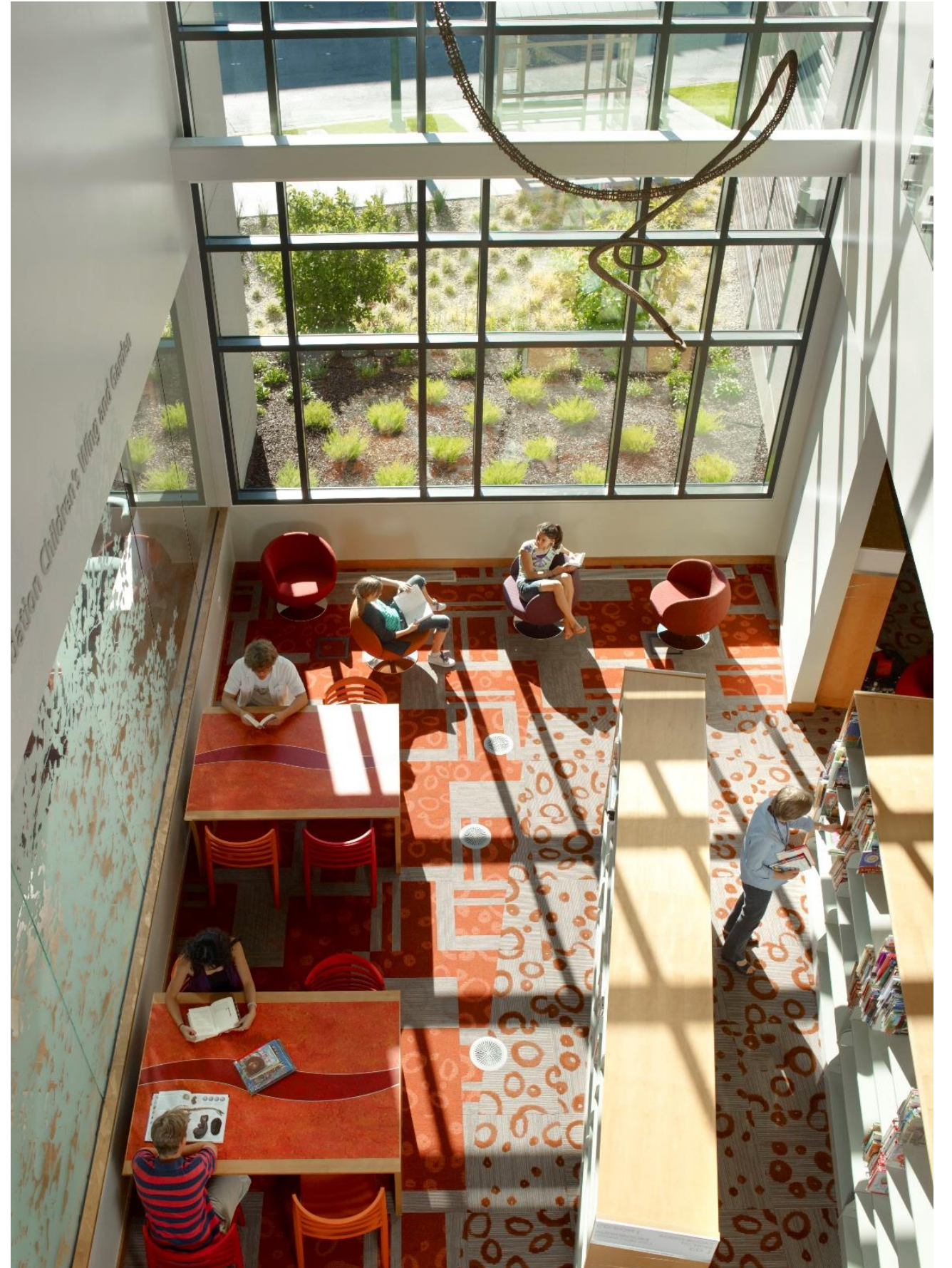
R

G

ADULT

DISCOVER

INSPIRE



QUIET

FOCUS

REFLECT



4

P

U

O

R

G

Project Delivery

Design Excellence

People Place Partnership

QUIET

FOCUS

REFLECT



4

Project Delivery

P

Design Excellence

U

People Place Partnership

O

R

G

TEENS

CONNECT

STUDY



4

P

U

O

R

G

Project Delivery

Design Excellence

People Place Partnership

TEENS

CONNECT

STUDY



4

P

U

O

R

G

Project Delivery

Design Excellence

People Place Partnership

TEENS

CONNECT

STUDY



4

P

U

O

R

G

Project Delivery

Design Excellence

People Place Partnership

CHILDREN'S

LEARN

PLAY



4

P

U

O

R

G

Project Delivery

Design Excellence

People Place Partnership

CHILDREN'S

LEARN

PLAY



4

Project Delivery

P

Design Excellence

U

People Place Partnership

O

R

G

CHILDREN'S

LEARN

PLAY



COLLABORATE

GATHER

SHARE



4

P

U

O

R

G

Project Delivery

Design Excellence

People Place Partnership

COLLABORATE

GATHER

SHARE



4

Project Delivery

P

Design Excellence

U

Partnership

O

R

People Place

G

COLLABORATE



GATHER



SHARE

MEET

FORUM

ENGAGE



4

Project Delivery

P

Design Excellence

U

People Place Partnership

O

R

G

MEET

FORUM

ENGAGE



MEET

FORUM

ENGAGE



4

Project Delivery

P

Design Excellence

U

People Place Partnership

O

R

G

HUB

INNOVATE

DESIGN



4

Project Delivery

P

Design Excellence

U

People Place Partnership

O

R

G

HUB

INNOVATE

DESIGN



4

Project Delivery

P

Design Excellence

U

People Place Partnership

O

R

G

HUB

INNOVATE

DESIGN



4

P

U

O

R

G

Project Delivery

Design Excellence

People Place Partnership

STUDIO

CREATE

TINKER



4

P

U

O

R

G

Project Delivery

Design Excellence

People Place Partnership

STUDIO

CREATE

TINKER



4

P

U

O

R

G

Project Delivery

Design Excellence

People Place Partnership

STUDIO

CREATE

TINKER



4

P

U

O

R

G

Project Delivery

Design Excellence

People Place Partnership

COMMUNITY

LOCAL

HISTORY



4

P

U

O

R

G

Project Delivery

Design Excellence

People Place Partnership

COMMUNITY

LOCAL

HISTORY



INFORM

SUSTAINABLE

ADAPT



INFORM



SUSTAINABLE



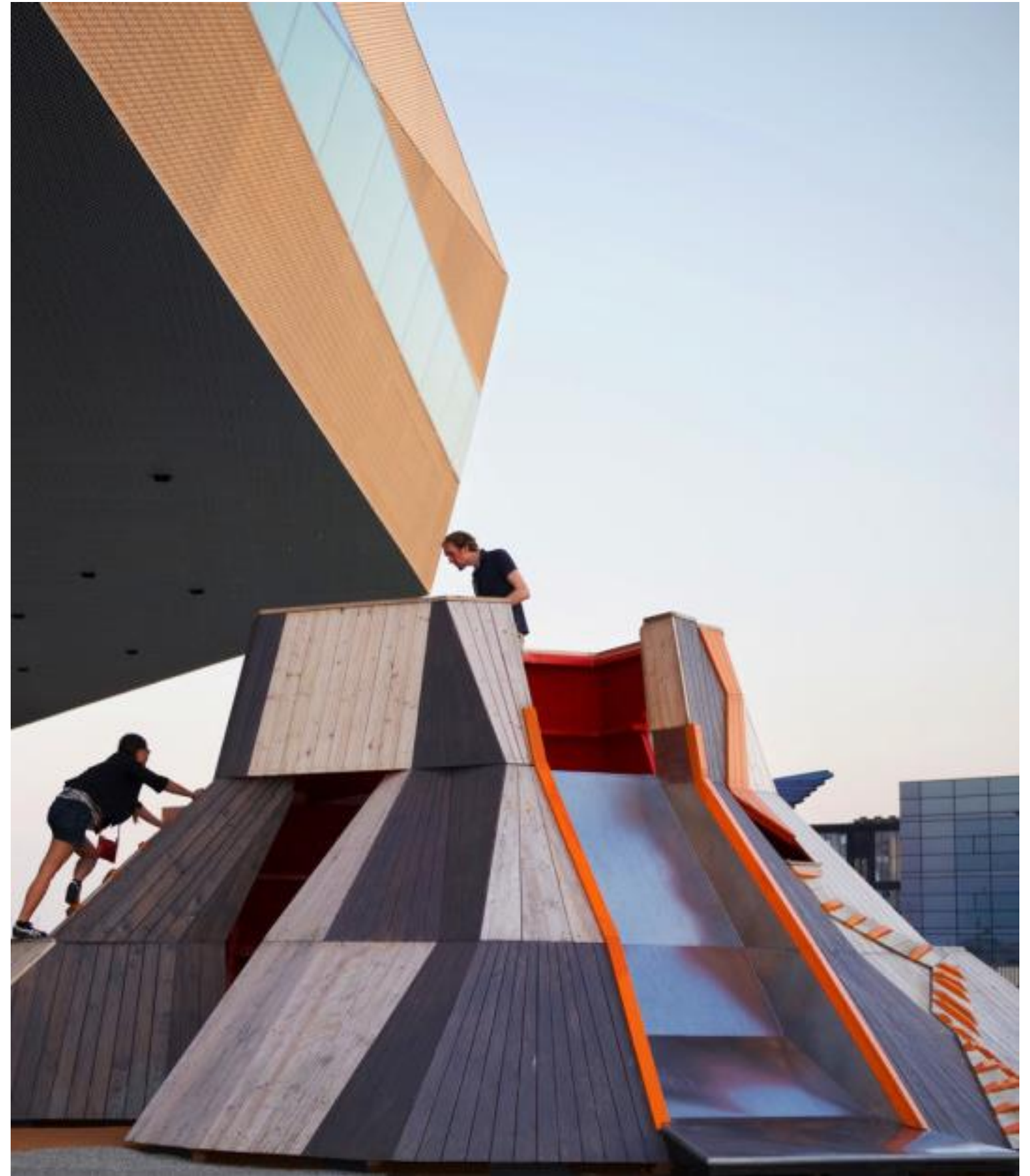
ADAPT



INFORM

SUSTAINABLE

ADAPT



GARDEN

ACTIVE

OPEN



4

P

U

O

R

G

Project Delivery

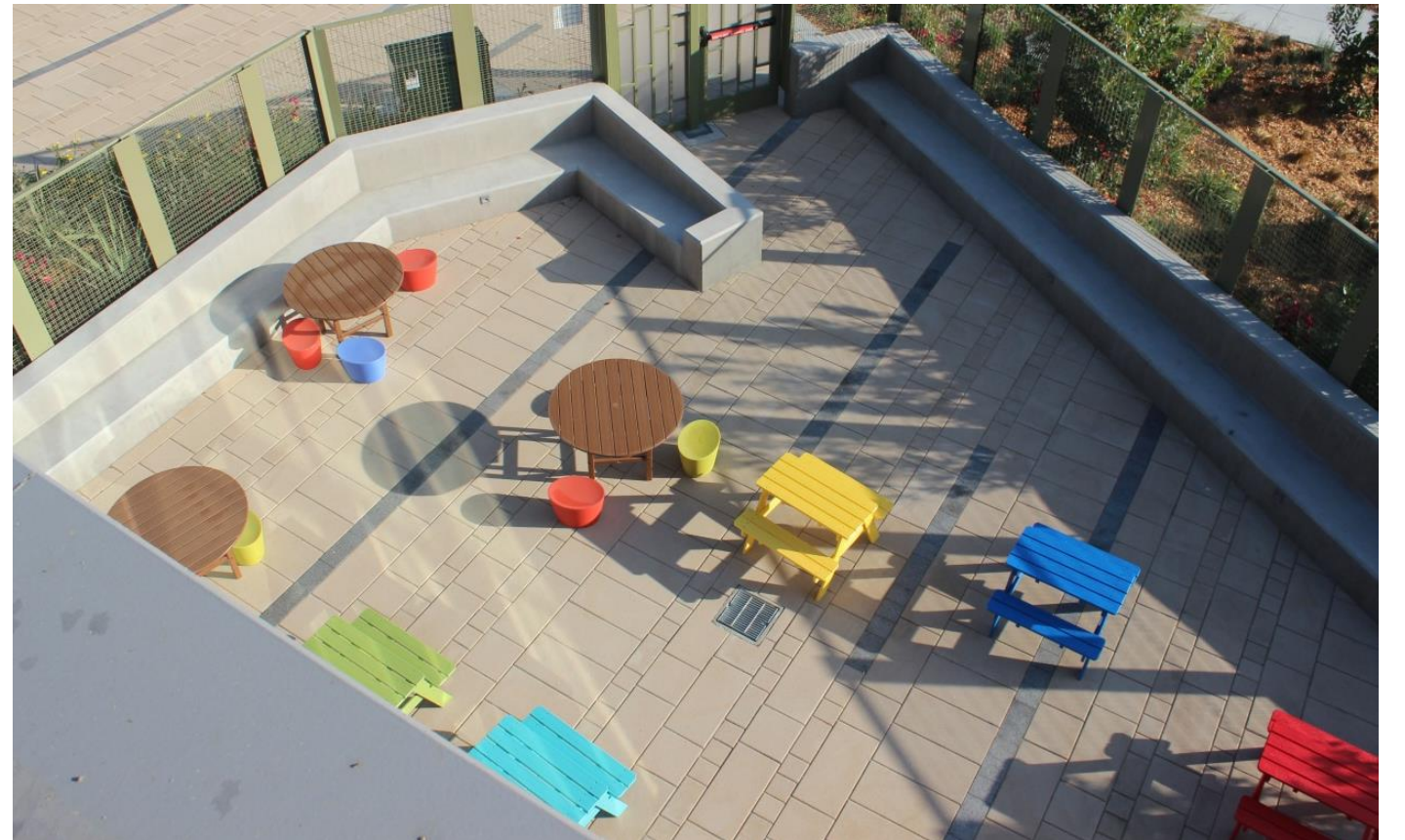
Design Excellence

People Place Partnership

GARDEN

ACTIVE

OPEN



GARDEN

ACTIVE

OPEN



4

P

U

O

R

G

Project Delivery

Design Excellence

People Place Partnership

SERVICE

FRIENDLY

CONVENIENT



SERVICE

FRIENDLY

CONVENIENT



AGENDA

- Call to Order
- Approval of July 27, 2016 Meeting Minutes
- Oral Communication
- Work plan and Schedule Review
- Draft Project and Process Goals
- Summary of Needs Assessments
- Library Building Program
- **Project Next Steps**
- Tours of New Library Tours
- Confirmation of Regular Meeting Dates
- Committee and Staff Communications
- Adjourn

AGENDA

- Call to Order
- Approval of July 27, 2016 Meeting Minutes
- Oral Communication
- Work plan and Schedule Review
- Draft Project and Process Goals
- Summary of Needs Assessments
- Library Building Program
- Project Next Steps
- **Tours of New Library Tours**
- Confirmation of Regular Meeting Dates
- Committee and Staff Communications
- Adjourn

AGENDA

- Call to Order
- Approval of July 27, 2016 Meeting Minutes
- Oral Communication
- Work plan and Schedule Review
- Draft Project and Process Goals
- Summary of Needs Assessments
- Library Building Program
- Project Next Steps
- Tours of New Library Tours
- **Confirmation of Regular Meeting Dates**
- Committee and Staff Communications
- Adjourn

AGENDA

- Call to Order
- Approval of July 27, 2016 Meeting Minutes
- Oral Communication
- Work plan and Schedule Review
- Draft Project and Process Goals
- Summary of Needs Assessments
- Library Building Program
- Project Next Steps
- Tours of New Library Tours
- Confirmation of Regular Meeting Dates
- **Committee and Staff Communications**
- Adjourn

Wrap-Up Questions and Comments

Thanks, we are so excited to develop this exciting project with the community!

New Pacifica Library

LAC Meeting 02

August 17 2016
