

CORE PLANNING COMMITTEE AND INTERPRETIVE COMMITTEE

March 5, 2018


Ohlone-Portolá Heritage Trail Feasibility Study

San Mateo County Parks Department





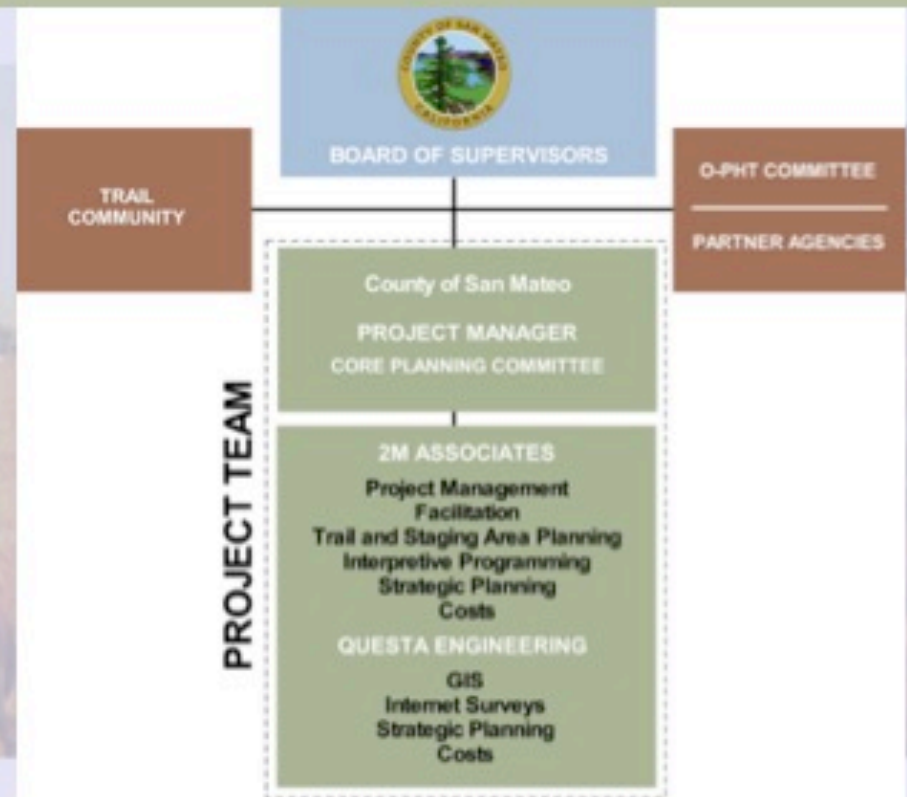
Ohlone-Portolá Heritage Trail Feasibility Study
San Mateo County Parks Department



AGENDA

- Introductions
- Feasibility Study Work Plan
- Study Parameters
- Focus Group Meetings
- Project Schedule

INTRODUCTIONS



Ohlone-Portolá Heritage Trail Feasibility Study
San Mateo County Parks Department

DRAFT VISION STATEMENT

The Ohlone-Portolá Heritage Trail in San Mateo County honors the region's California Indians and commemorates the Portola Expedition on an interpretive, multi-use recreational and auto route that takes us back in time to understand and appreciate native history and culture and follow the footsteps of the first European explorers to see the San Francisco Bay.

FEASIBILITY STUDY WORK PLAN

TASK	Month												2018	2019
	F	M	A	M	J	J	A	S	O	N	D	J		
Task 1: Define Work Plan and Project Schedule	■													
Task 2: Research, Analysis, and O-PHT Committee Group Interview		■	■		■									
Task 3: Recommendation Development					■	■								
Task 4: Draft Feasibility Study Report, Presentation and Materials, and Meetings on Draft O-PHT Feasibility Study Report							■	■						
Task 5: Community Meetings and Online Outreach								■	■	■				
Task 6: Final O-PHT Feasibility Study Report											■			

FEASIBILITY STUDY WORK PLAN

Task 2: Research & Analysis

- Vision, Goals
- Opportunities and Constraints
- Trail Route Gaps
- Design Standards / “Braided Trail”
- Focus Group Meetings

FEASIBILITY STUDY WORK PLAN

Task 3: Recommendations*

- Priority Criteria / Priorities
- Probable Cost Projections (near-term priorities)
- Long-term Strategies
- Historic Trail Criteria and Designation

* Joint Core Planning Committee and Interpretive Committee Meeting

FEASIBILITY STUDY WORK PLAN

Task 4: DRAFT REPORT*

- Review
- Revise

Task 5: COMMUNITY MEETINGS

Task 6: FINAL REPORT*

* Joint Core Planning Committee and Interpretive Committee Meeting

THE OHLONE



Language
Boundaries

Source: Levy, Richard, Costanoan. In *California, Handbook of North American Indians*, Volume 8, edited by Robert F. Heizer, pp. 485-495. Smithsonian Institution, Washington, D.C.



Territorial
Distribution

Source: Randall Miliken, Laurence H. Shoup, and Beverly R. Ortiz. *Ohlone/Costanoan Indians of the San Francisco Peninsula and their Neighbors, Yesterday and Today*. National Park Service, Golden Gate National Recreation Area, San Francisco, California

THE OHLONE



Source: 2M Associates; POST



Ohlone-Portolá Heritage Trail Feasibility Study
San Mateo County Parks Department

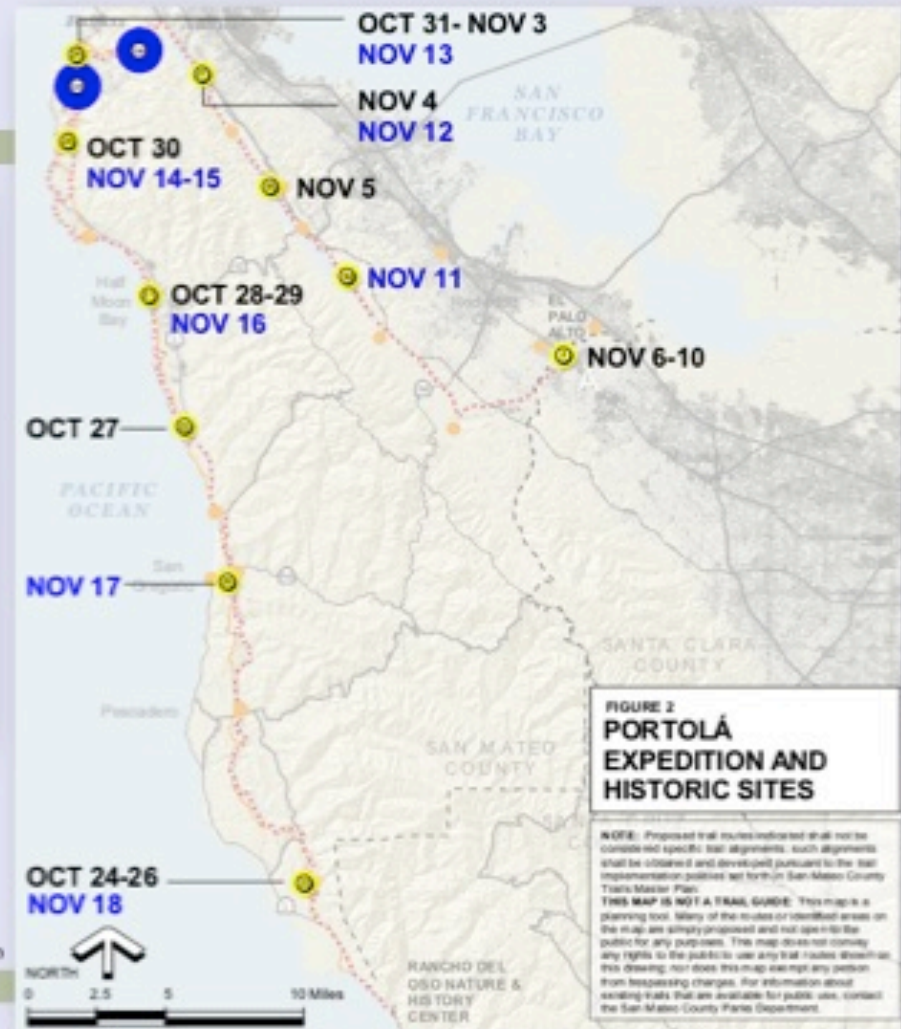
PORTOLÁ EXPEDITION



Os de Balaguer, Spain

Source: ZW Associates; POST; Mark Hylkema

Ohlone-Portolá Heritage Trail Feasibility Study San Mateo County Parks Department



STUDY PARAMETERS

STATEMENT OF HISTORIC SIGNIFICANCE

- Overall expedition time: July 14, 1769 – January 24, 1770
- 105 days to reach San Mateo County (?)
- “Discovered” San Francisco Bay on November 4, 1769
- In San Mateo County: October 27 – November 20 (28 days; 26 overnights?)
- Approximately 90-mile route (one way)

Ohlone-Portolá Heritage Trail Feasibility Study
San Mateo County Parks Department

Statement of Historic Significance
Ohlone/Portolá Heritage Trail Committee*
2018

Introduction

Before the Gaspar de Portolá expedition happened upon San Francisco Bay in 1769, *Alta California* was an unknown place except to native people for approximately 10,000 years. Among these native people were the Ohlones who were spread throughout the southern San Francisco Bay Region and beyond, composing 50 local tribes in many more villages. Each village had its own land and customs. Spanish explorers recorded villages at intervals of three to five miles in most areas.¹

However, after this Spanish “discovery” of the Bay, things changed rapidly. The Ohlones who lived in what we could call San Mateo County today, were among the first in *Alta California* to be subjugated by the newcomers by being led into the Spanish missions. Their culture was nearly eradicated, and the population levels of the people fell dramatically. In fact, most of coastal California became organized within this foreign system. After a comparatively few years, with the changing of hegemony from Spain to Mexico to the United States, California became known the world over. As a result, there are two distinct stories to be interpreted in San Mateo County regarding this Ohlone/Portolá Heritage Trail: that of the Ohlones Indians and that of the Portolá Expedition.

*The Committee wishes to acknowledge the United States National Park Service for allowing extensive utilization of its *Historic Resources Study for the Golden Gate National Recreation Area in San Mateo County* (2010) by Mitchell P. Postel for this Statement of Historic Significance.

STUDY PARAMETERS

NATIONAL HISTORIC TRAIL CRITERIA

- Historic Use
- National Significance: with respect to American history, such as exploration
- Interest: Significant potential for public recreational use or historical interest based on historic interpretation and appreciation



STUDY PARAMETERS

250 YEAR ANNIVERSARY

TAKE-INTERPRETIVE EXHIBITS 2019 SYMPOSIUM
WEBSITE DEVELOPMENT
TAKE-A-HIKE PROGRAMS
MAGAZINE
PICTURES

NOVEMBER 4, 2019

POSTER CREATION NATIONAL GEOGRAPHIC TRAIL GAMES
FILMS
SANCHEZ ADOBE VISITOR CENTER

Ohlone-Portolá Heritage Trail Feasibility Study
San Mateo County Parks Department



STUDY PARAMETERS

RECREATION ROUTE: COMPLETED OFF-STREET HIKING TRAIL

Source: 2M Associates; POST



Ohlone-Portolá Heritage Trail Feasibility Study
San Mateo County Parks Department

STUDY PARAMETERS

RECREATION ROUTE: WALKING RIGHT NOW (not on major highways)

Source: 2M Associates; POST



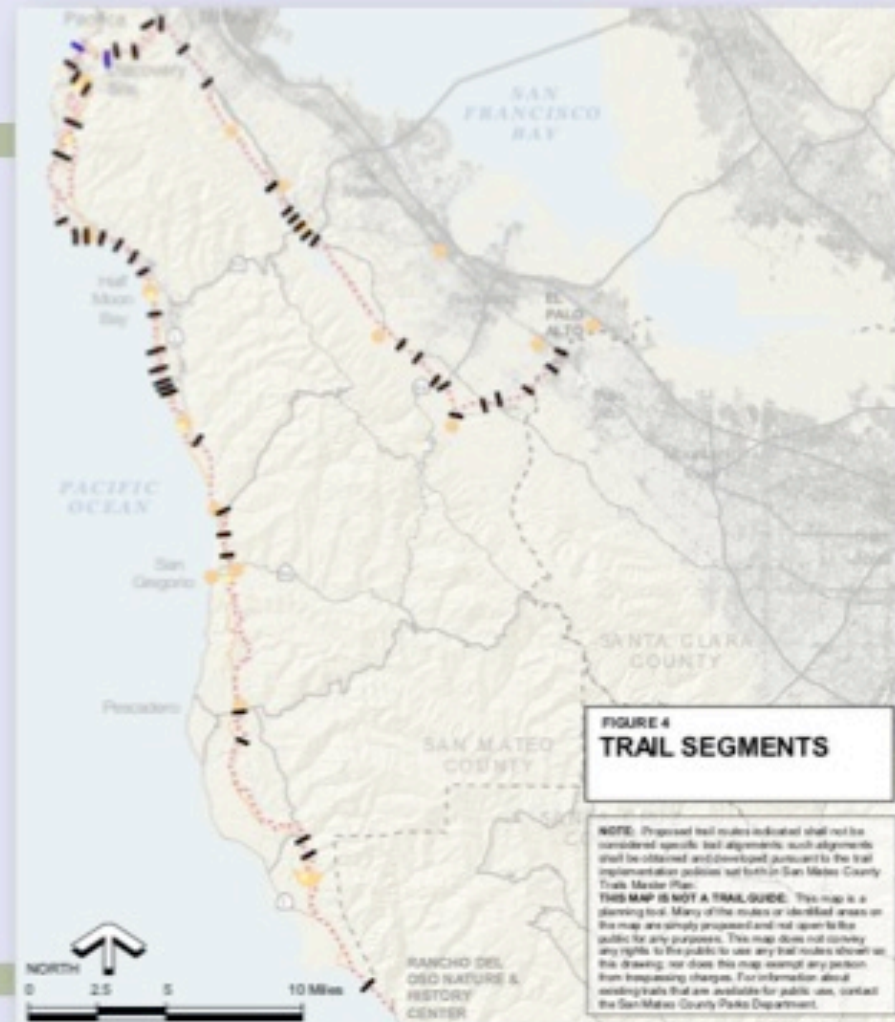
Ohlone-Portolá Heritage Trail Feasibility Study
San Mateo County Parks Department

STUDY PARAMETERS

RECREATION ROUTE SEGMENTS

- 55 Segments
- Existing, Proposed, Conceptual
- Some Alternative Alignments
- Highly Varied Conditions
- Highly Varied Management

Source: 2M Associates; POST



Ohlone-Portolá Heritage Trail Feasibility Study
San Mateo County Parks Department

STUDY PARAMETERS

RECREATION ROUTE



Source: 2M Associates; POST



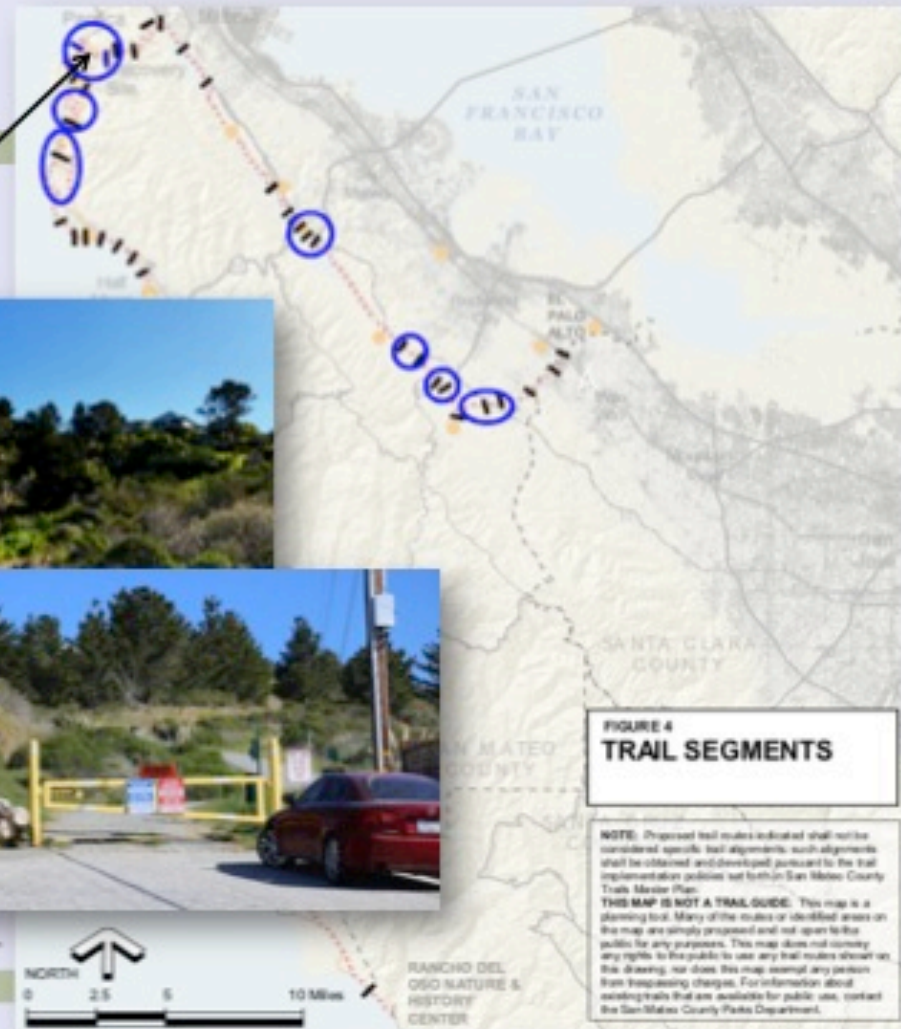
Ohlone-Portolá Heritage Trail Feasibility Study
San Mateo County Parks Department

STUDY PARAMETERS

RECREATION ROUTE



Source: 2M Associates; POST



Ohlone-Portolá Heritage Trail Feasibility Study
San Mateo County Parks Department

STUDY PARAMETERS

RECREATION ROUTE



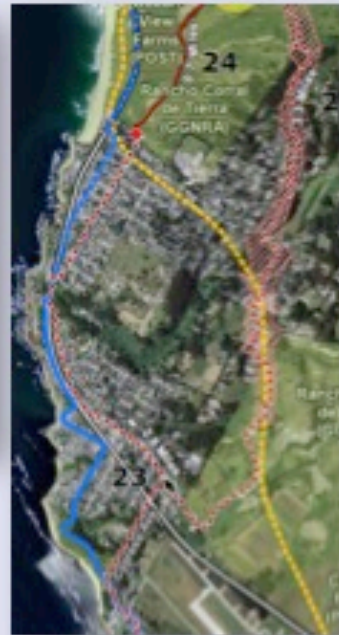
Source: 2M Associates; POST



Ohlone-Portolá Heritage Trail Feasibility Study
San Mateo County Parks Department

STUDY PARAMETERS

RECREATION ROUTE



Source: 2M Associates; POST



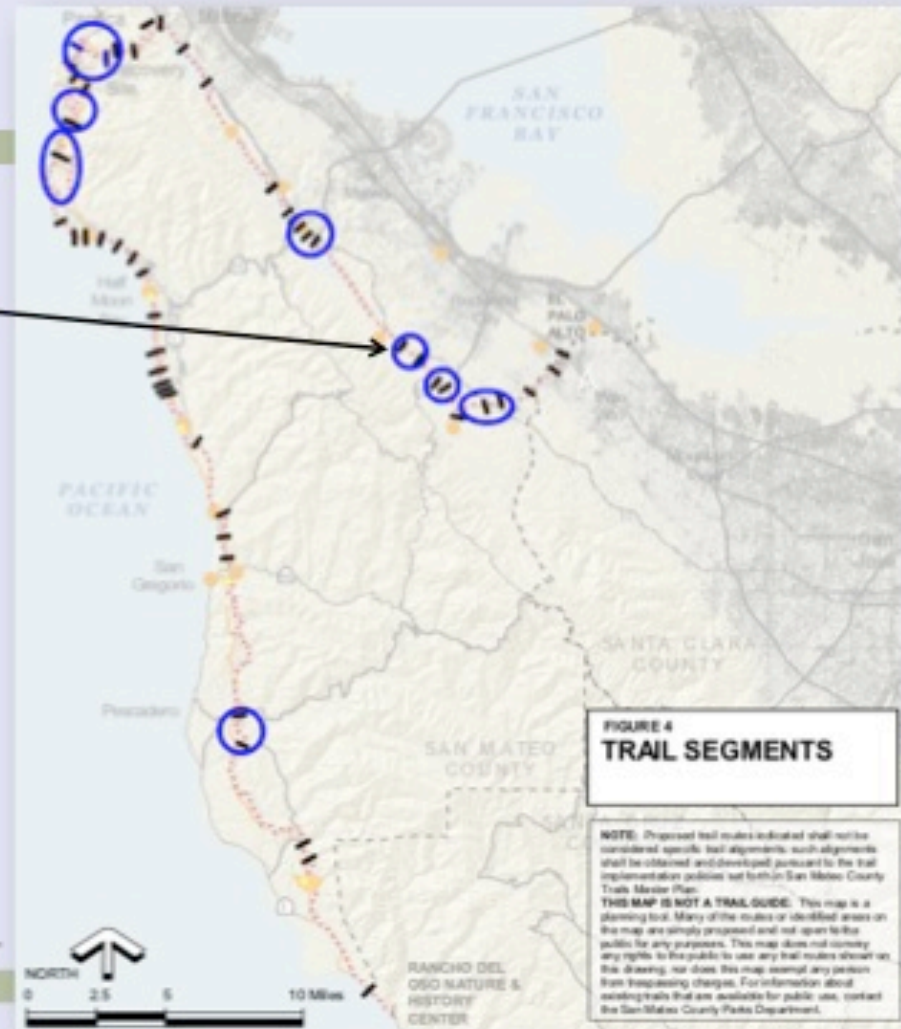
Ohlone-Portolá Heritage Trail Feasibility Study
San Mateo County Parks Department

STUDY PARAMETERS

RECREATION ROUTE



Source: 2M Associates; POST



Ohlone-Portolá Heritage Trail Feasibility Study
San Mateo County Parks Department

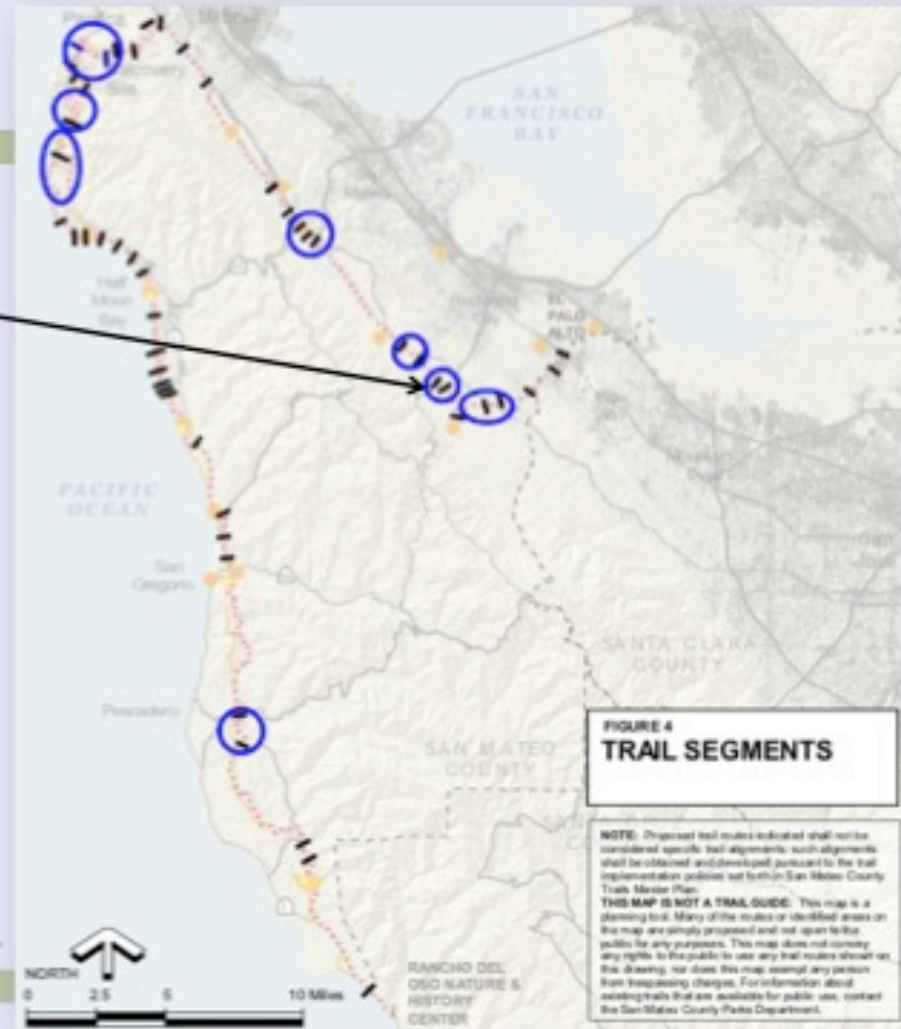
STUDY PARAMETERS

RECREATION ROUTE

Source: Town of Woodside General Plan 2012; Circulation Element



Source: 2M Associates; POST



Ohlone-Portolá Heritage Trail Feasibility Study
San Mateo County Parks Department

STUDY PARAMETERS

RECREATION ROUTE



Ohlone-Portolá Heritage Trail Feasibility Study
San Mateo County Parks Department

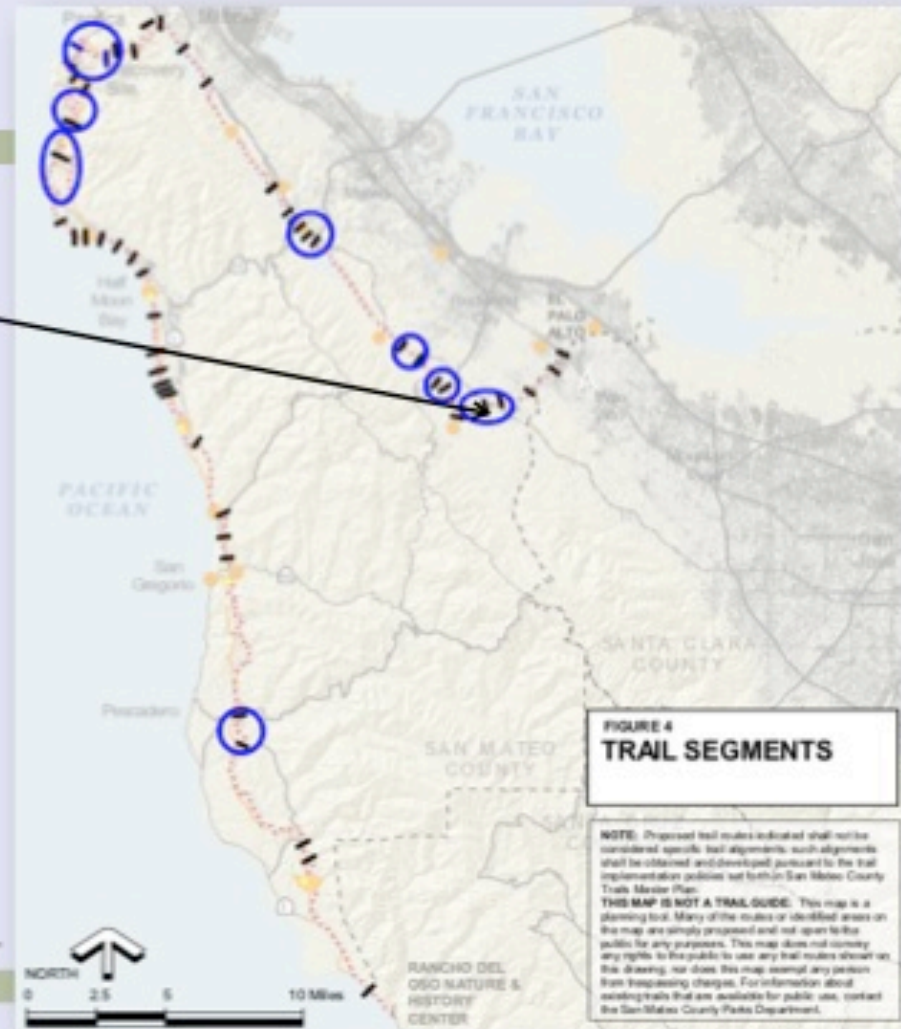


STUDY PARAMETERS

RECREATION ROUTE



Source: 2M Associates; POST



Ohlone-Portolá Heritage Trail Feasibility Study
San Mateo County Parks Department

STUDY PARAMETERS

AUTO ROUTE

- SR 1
- Bean Hollow Road
- Pescadero Creek Road
- Stage Road
- SR 1
- Sharp Park Road
- Interstate 280
- Canada Road
- SR 84
- Whisky Hill Road
- Sand Hill Road

Source: POST



Ohlone-Portolá Heritage Trail Feasibility Study
San Mateo County Parks Department

STUDY PARAMETERS: INTERPRETATION

ART

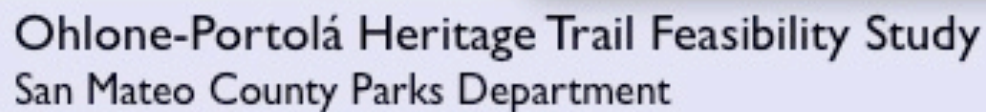


STUDY PARAMETERS: INTERPRETATION

DESTINATION SITE



CAMP SITES



FOCUS GROUP MEETINGS

- Vision, goals, and specific objectives
- Land use, transportation, and other planning considerations
- Opportunities and constraints
- Cultural perspectives and interpretive messaging
- Implementation criteria

FOCUS GROUP MEETINGS

- Peninsula Working Group / Trail Alignment (and Interpretation)
- Coastside / Trail Alignment
- Bayside / Trail Alignment
- Historical / Interpretation (and Trail Alignment)

GROUP	GENERAL INTEREST	SPECIFIC INVITEES: AGENCIES/INTERESTS	APPL. GROUP SIZE	TENTATIVE DATES
1	Peninsula Working Group / Trail Alignment (and Interpretation)	<ul style="list-style-type: none"> • NPS/IGMRA • Midpen • California State Parks • POST • Coastal Conservancy • CALTRANS • SFPUC / San Francisco Water Department • Other 	14 +/-	April, 2018 Daytime / Afternoon
2	Coastside / Trail Alignment	<ul style="list-style-type: none"> • Pacifica • Midcoast Community Council • Half Moon Bay • Pescadero Municipal Advisory Council • San Mateo County Farm Bureau • Other 	10 +/-	April, 2018 Daytime / Afternoon?
3	Bayside / Trail Alignment	<ul style="list-style-type: none"> • Woodside • Menlo Park • Palo Alto • Portola Valley • CALTRANS (?) • Other 	8 +/-	April, 2018 Daytime / Afternoon
4	Historical / Interpretation (and Trail Alignment)	<ul style="list-style-type: none"> • SMC historical Museum • Pacifica Historical Society • Half Moon Bay Historical Society • Woodside Historical Association • Menlo Park Historical Association • Palo Alto Historical Association • Laura Jones (Stanford Archaeologist) • Paul Reimer • Johnathan Condero (by phone?) • Other 	18 +/-	April, 2018 Evening?

FEASIBILITY STUDY WORK PLAN

TASK	Month												2018	2019
	F	M	A	M	J	J	A	S	O	N	D	J		
Task 1: Define Work Plan and Project Schedule	■													
Task 2: Research, Analysis, and O-PHT Committee Group Interview		■	■		■									
Task 3: Recommendation Development					■	■								
Task 4: Draft Feasibility Study Report, Presentation and Materials, and Meetings on Draft O-PHT Feasibility Study Report							■	■						
Task 5: Community Meetings and Online Outreach								■	■	■				
Task 6: Final O-PHT Feasibility Study Report											■			

FUTURE MEETINGS

JOINT CORE PLANNING COMMITTEE AND INTERPRETIVE COMMITTEE MEETING

- June 26, 2018
- July 24, 2018
- September 6, 2018
- November 13, 2018

CORE PLANNING COMMITTEE AND INTERPRETIVE COMMITTEE

March 5, 2018

Ohlone-Portolá Heritage Trail Feasibility Study

County of San Mateo Parks Department