

# Rockaway Quarry Reclamation Plan Project

NOP Scoping Meeting  
Wednesday, September 16, 2020



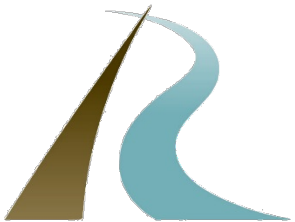
PRESENTED BY:



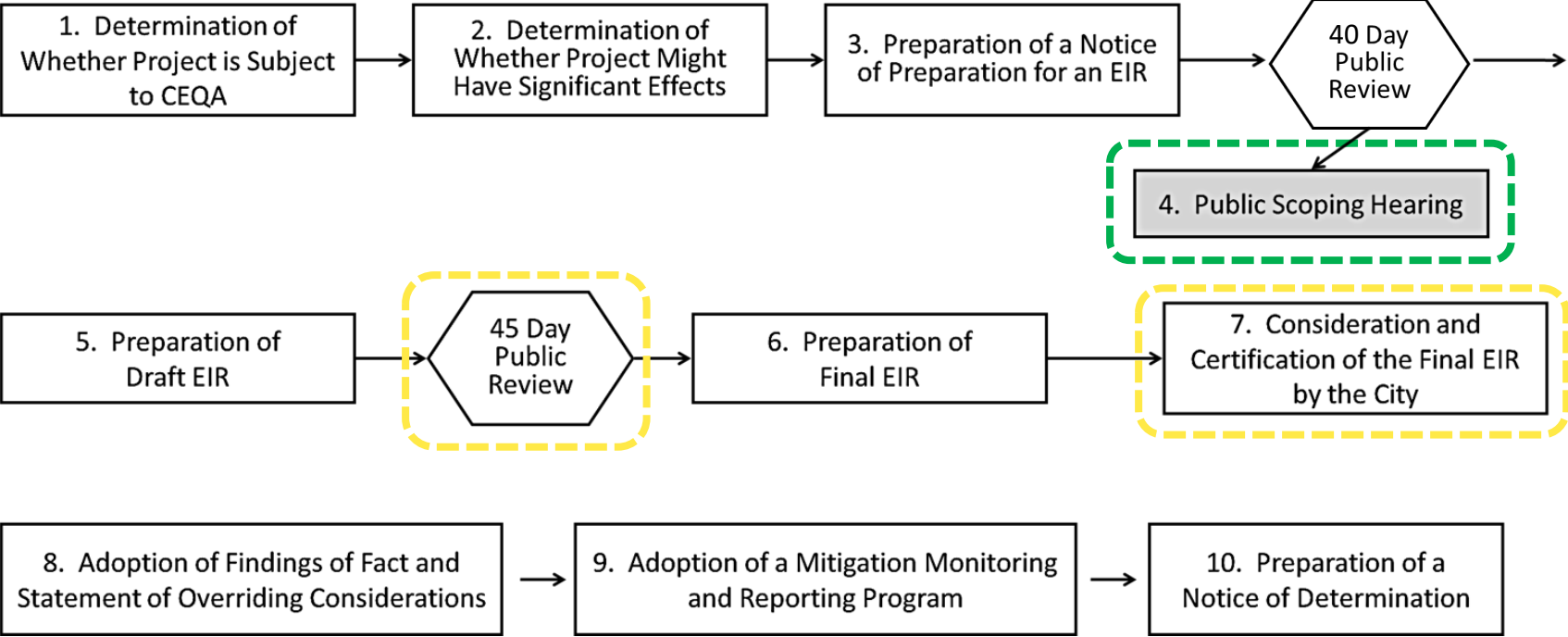
# Overview



- CEQA Process
- Purpose of Scoping Meeting
- Project Overview
- EIR Scope



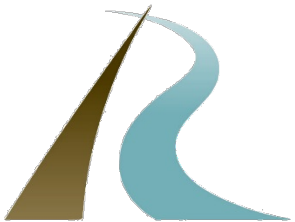
# CEQA Process



# Purpose of Scoping Meeting



- Opportunity for public to comment on environmental issues
- Inform the scope of EIR analysis



# Project Overview



- The project site is the location of the Rockaway Quarry



# Project Overview



- The proposed project would include the reclamation of the Quarry
- The term “Reclamation” is defined in Section 2733 of the Public Resources Code
- The combined process of land treatment to minimize adverse effects from surface mining operations, so that mined lands are left in a usable condition that is readily adaptable for alternate land uses and create no danger to public health or safety.

# Reclamation is Required



- State law
  - Surface Mining and Reclamation Act
- Pacifica Municipal Code
  - Title 9, Chapter 2 “Surface Mining and Reclamation”

# Project Overview



- Reclamation activities would involve:
  - Earthwork to regrade the over steepened slopes of the former Quarry into a safe condition;
  - Revegetation;
  - Installation of new drainage infrastructure; and
  - Construction of new unpaved trails.
  - The Eastern Parcel would be reclaimed to include the restoration of a 0.60-acre seasonal wetland and a 0.15-acre California Red-Legged Frog pond.

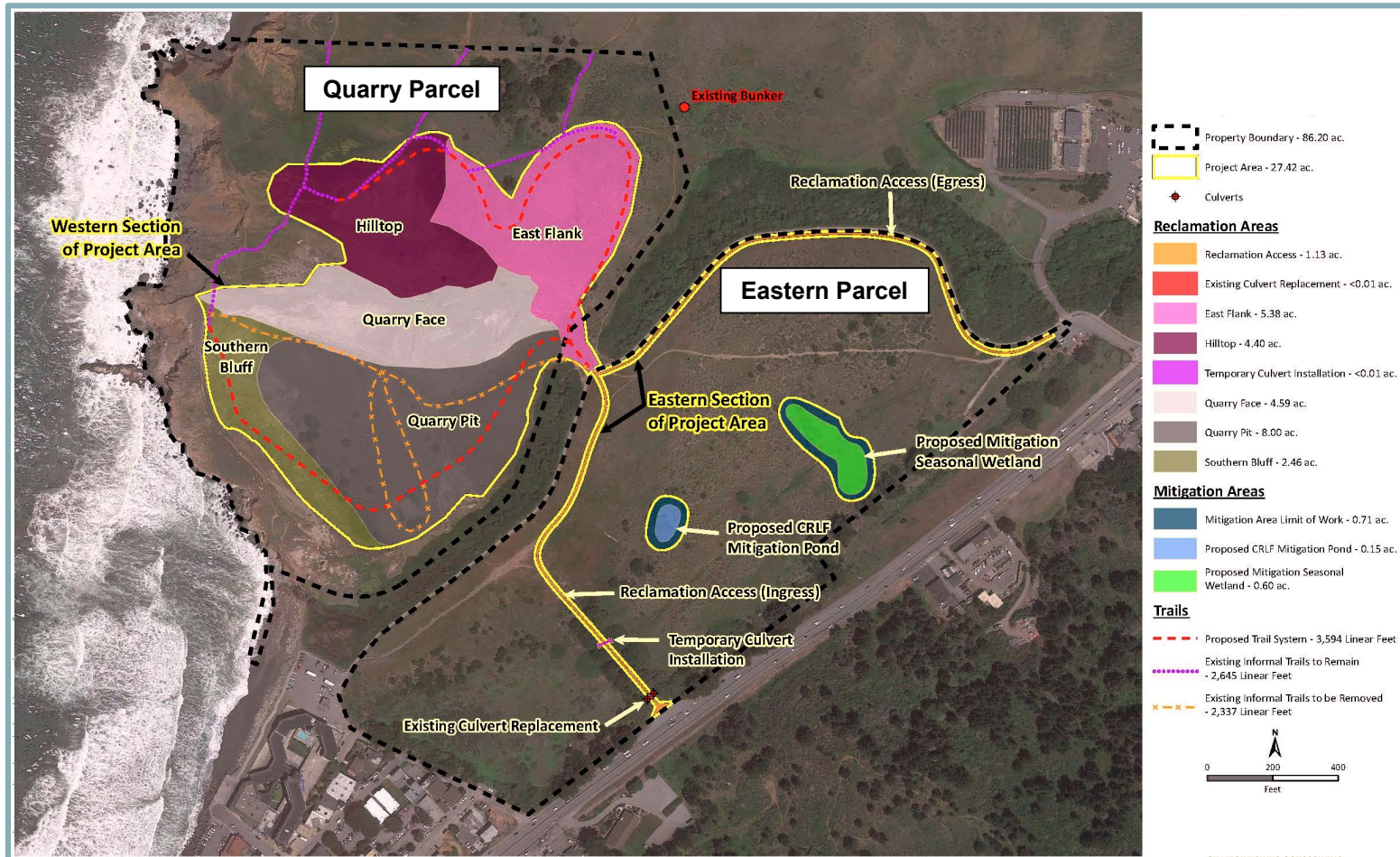


# Project Overview

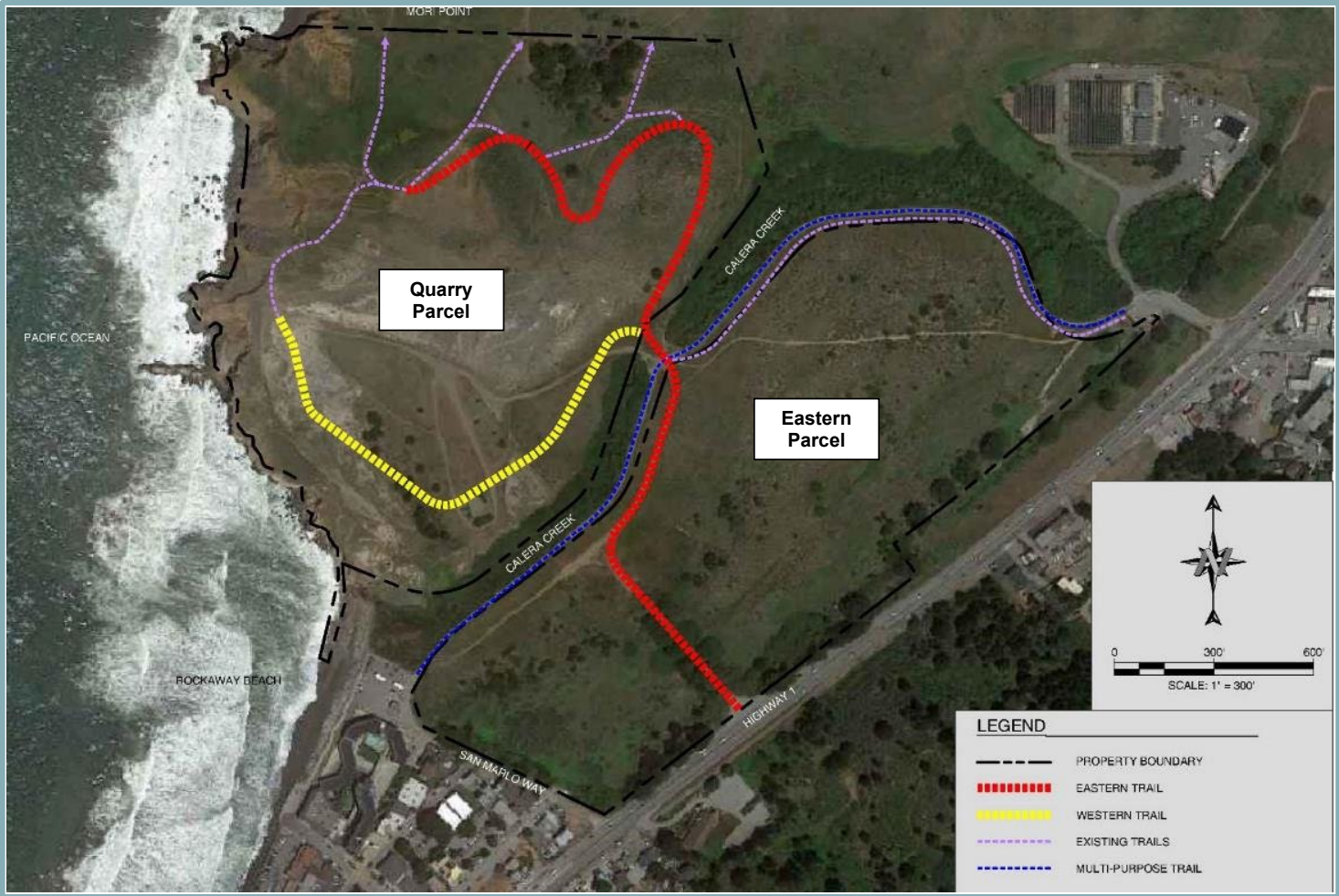


- Most reclamation activities on Quarry Parcel
- Eastern Parcel used primarily for access to the site and environmental mitigation areas
- Trucks would ENTER from old quarry road on Highway 1 south of Reina del Mar
- Trucks would EXIT at the intersection of Highway 1 and Reina del Mar
- Import of approximately 1,000,000 cubic yards of soil
- Reclamation would last approximately 4 years

# Site Plan



# New Reclamation Trails



# Entitlements



The proposed project would require City approval of the following entitlements:

- Certification and adoption of the EIR and MMRP;
- Approval of a Quarry Use Permit; and
- Approval of a Heritage tree removal authorization for removal of 11 heritage trees.

The approvals DO NOT include development of the Quarry.

# Other Agency Permits



The proposed project would also require approvals from other agencies:

- California Coastal Commission
- California Department of Conservation
- San Francisco Bay Regional Water Quality Control Board
- US Army Corps of Engineers
- US Fish and Wildlife Service

# EIR Scope



- **Aesthetics**

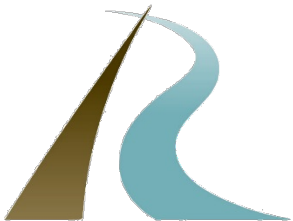
- Analysis of issues related to scenic vistas, trees, scenic highways, existing visual character or quality of the project area, light, and glare

- **Air Quality and GHG Emissions**

- Quantification of construction, operational, and cumulative emissions of criteria air pollutants, TACs, and GHG emissions
- An HRA will include an analysis of acute, chronic, carcinogenic, and non-carcinogenic health hazards, due to exposure of TACs

- **Biological Resources**

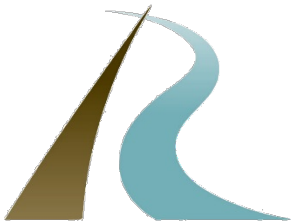
- Effects on plant communities, wildlife, and wetlands



# EIR Scope Continued



- **Cultural and Tribal Cultural Resources**
  - Potential impacts to any on-site historical, archaeological, and/or paleontological resources
- **Geology and Soils/Mineral Resources**
  - Analysis of impacts related to soil erosion, earthquakes, liquefaction, expansive soils, and any unique geological features within the project area
- **Hydrology and Water Quality**
  - Impacts related to stormwater drainage, water quality, groundwater, and flooding



# EIR Scope Continued



- **Land Use and Planning**

- Address any policy or consistency issues related to the proposed entitlements.
- Discuss the compatibility of the proposed project with the surrounding land uses, and the compatibility of the proposed final land uses on the previously mined land

- **Noise**

- Analysis of impacts upon nearby sensitive receptors from reclamation-related noise and vibration

- **Parks and Recreation**

- Summarize existing setting, identify potential new demand, and discuss how the proposed project could affect current parks and recreational facilities (Calera Creek Multi-Purpose Trail)





# EIR Scope Continued

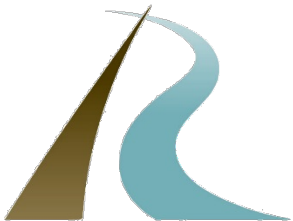


- **Transportation**

- Quantification of current and future roadway and intersection capabilities with and without project, site circulation and access, analysis of emergency access, transit, pedestrian, and bicycle facilities
- Quantification of project trip generation and vehicle miles traveled (VMT)

- **Utilities and Service Systems**

- Identify potential new demand for services for water, sewer, and solid waste services



# Public Comment Period



- Public comment period closes on October 12<sup>th</sup>
- Please limit comments to the scope of the EIR
- Submit comments to:

Christian Murdock  
City of Pacifica Planning Department  
170 Santa Maria Ave.  
Pacifica, CA 94044  
murdockc@ci.pacifica.ca.us

- More information at <https://www.cityofpacificac.org/planning>
  - Project plans, FAQ page

